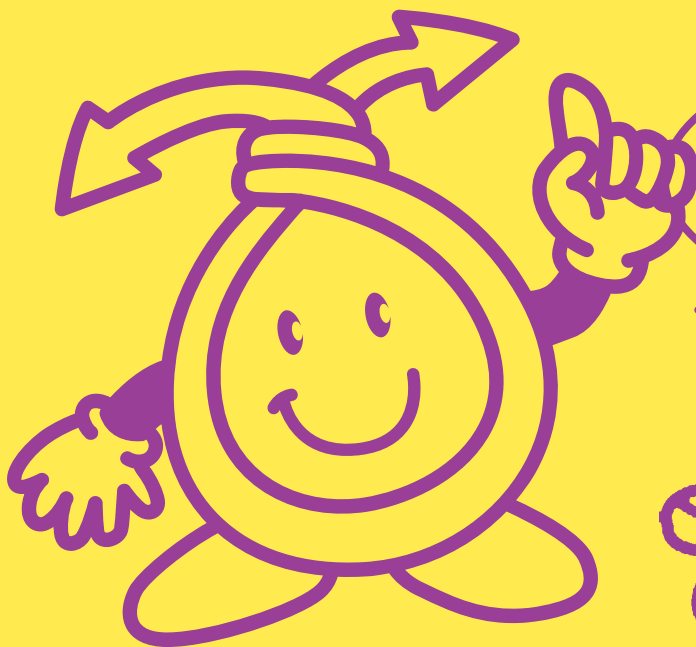


New

Handbook to be retained

# Acceptable How to separate and dispose of recyclables and garbage



Meguru-kun

My name comes from the image of recycling as "circulate and return" ("meguru" in Japanese).

Garbage volume in Kyoto City has successfully been cut in half from its peak, but more garbage reduction and separated recycling are necessary in order to reduce environmental impacts.



Kogomi-chan (Bioplastic Version)

My name, Kogomi (small garbage), means to put your garbage on a diet by making it smaller.

Garbage disposal in Kyoto City costs at least ¥20 billion per year!  
Garbage reduction leads to cost reduction!  
Thank you for your cooperation!

# 京都市

Environment Policy Bureau

Issued April 2024



Cans, glass bottles, and PET bottles / Plastics 03

Recyclable paper 07

Small metal items, spray cans / Burnable garbage 09

How to put out oversized garbage. Carry the garbage to an incineration plant 11

Other collection methods for recyclables 13

Residents of condominiums, etc., where garbage is collected by private-sector companies 17

How to separate and discard garbage requiring extra caution 19

What happens to recyclables 21

Other efforts 23

Items that cannot be accepted in Kyoto City 25

Check this first


# Rules for discarding garbage

## Rule No. 1 Use Kyoto City's designated residential garbage collection bags for your garbage

Kyoto City has introduced a fee-based designated bag system. The designated bags come in two types: those for burnable garbage and those for recyclable waste.



Use this yellow bag when discarding burnable garbage!



For cans, glass bottles, PET bottles, or plastics (plastic products and plastic containers and packaging), use this transparent bag!

- ▲ **Garbage set out without being in a designated bag will have an "Improper" sticker affixed and will not be collected.**
- ▲ For small metal items and spray cans, rather than using a designated bag, place them in a transparent bag that makes its content visible.
- ▲ Residents of condominiums, etc., where garbage collection is by private-sector companies may have collection rules different from those of Kyoto City. Please confirm with the manager, etc., of the building where you live. **P17, P18**

## Rule No. 2 Thoroughly separate garbage before setting it out

Waste is divided into various categories from the perspective of resource recycling, etc. Correctly separate and set out your waste.

- ▲ **If the wrong category of item is placed in a bag, the bag will have an "Improper" sticker affixed and will not be collected.**

Separation is mandatory in this city!

## Rule No. 3 You cannot set out commercial waste

Commercial waste from shops, offices, lodging facilities, etc., cannot be put in residential waste. Please ask for a licensed business or take it to a Kyoto City Incineration Plant or industrial waste disposal facility. **P25**

## Requests when setting out garbage

Please do not put out your garbage the night before collection day. Put it in the designated place **by 8:00 a.m.** on collection day.



- ▲ If you put out your garbage at night, cats or crows might get into it and make a mess.
- ▲ Please put your cans, glass bottles, and PET bottles, plastics (plastic products and plastic containers and packaging), small metal items and spray cans, and miscellaneous paper waste, etc., in a site with a sign designating it as a recyclable waste designated pickup point.

For one collection, bags **should be about a weight you can hold in one hand, with generally up to two bags per household**

- ▲ If you put out a lot of garbage at one time, it may block passage, and other people's garbage may not be collected, so please plan your disposal accordingly.

Close your bags tightly!

## Use the convenient garbage separation guide app!

In addition to garbage day notification functions, the app now incorporates a chatbot function to provide you with easy-to-understand guidance on everyday garbage disposal and sorting. Feel free to download it!

The garbage separation guide app "threeR" Search



## How to separate and dispose of recyclables and garbage..... 03

**Cans, glass bottles, and PET bottles..... 03**  
Food and drink cans and glass bottles and PET bottles for beverages, alcohol, and soy sauce, etc.

**Plastics..... 05**  
Plastic products and plastic containers and packaging

**Recyclable paper..... 07**  
newspapers, cardboard, cartons, miscellaneous paper waste (paper bags, wrapping paper, paper boxes, envelopes and postcards, flyers and catalogs, etc.)

**Small metal items and spray cans..... 09**  
Pots, kettles, and other metal items whose longest dimension is more or less under 30 cm (not including handles) and spray cans

**Burnable garbage..... 10**  
kitchen garbage, non-recyclable paper, glass, etc.

**How to discard oversized garbage..... 11**  
Oversized garbage such as chests of drawers, tables, and bicycles

**Carrying garbage to an Incineration Plant..... 12**  
How to take garbage to a Kyoto City Incineration Plant, etc.

**Other collection methods for recyclables..... 13**  
Community collection services, recyclables collection facilities, mobile collection services, etc.

**Home appliances..... 15**  
Four categories of home appliances, personal computers, small appliances

**How to put out garbage if you are a resident of a condominium, etc., where garbage is collected by private-sector companies..... 17**

**How to separate and discard garbage requiring extra caution..... 19**

**What happens to recyclables..... 21**

**Other efforts (Collection of dead cats and dogs, etc., removal of human waste, beautification activities)..... 23**

**Items that cannot be accepted in Kyoto City..... 25**

**Garbage Separation Dictionary..... 26**  
You can search for garbage sorting and discarding methods by category in Japanese syllabary order.....

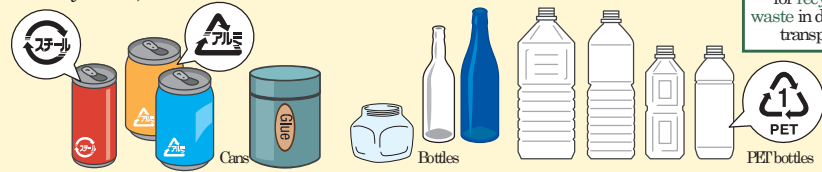
Cans, glass bottles, and PET bottles / Plastics	03
Recyclable paper	07
Small metal items, burnable garbage	09
How to put out oversized garbage, carrying garbage to an incineration plant	11
Other collection methods for recyclables	13
Residing in condominiums, etc., where garbage is collected by private-sector companies	17
How to separate garbage requiring extra caution	19
What happens to recyclables	21
Other efforts	23
Items that cannot be accepted in Kyoto City	25

# How to separate and dispose of recyclables and garbage that are regularly collected

We will explain the types and correct ways of separating and disposing of recyclables and garbage that Kyoto City picks up regularly on a weekly (or monthly) basis.

## Cans, glass bottles, and PET bottles

Food and drink cans and glass bottles and PET bottles for beverages, alcohol, and soy sauce, etc.

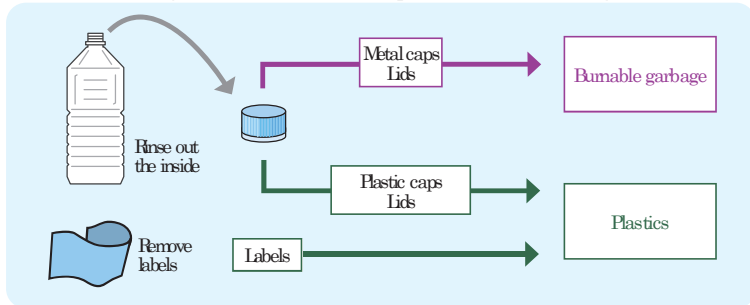


garbage bags  
Collection is once per week for recyclable waste in designated transparent

\*The three types, cans, glass bottles, and PET bottles, can be mixed and placed in the same bag.  
\*PET bottles that do not have the "PET" recycle mark should be disposed of with "Plastics."  
\*Please also cooperate with retailer collection at supermarkets and the like.

### How to correctly discard

- 1 Empty them and lightly rinse the inside
- 2 Discard as is, without flattening  
⚠ Please do not flatten cans and PET bottles, because this will prevent machinery from identifying them during recycling.
- 3 Do not put anything other than cans, glass bottles, and PET bottles in the same bag with them!  
⚠ Do not discard them with foreign objects such as cigarette butts or nails inside them
- 4 Remove caps and labels from glass bottles and PET bottles before separating them  
⚠ PET bottle caps and labels are made from different materials than the bottles themselves, so if they are left on, they can interfere with recycling. Put the caps and labels you remove from the bottles in with your "Plastics" for disposal. Remove labels from glass bottles to the extent possible as well. (You do not have to go to extremes to remove caps and labels attached to glass bottles.)



### Key points about separation Check the mark and separate

For the following items, check for a recycle mark and separate.

Reusable bottles (One-sho [1.8 liters] bottles, beer bottles)  
Look for this mark   
To collection at base **P13, 14**

Plastic containers for sauces, mayonnaise, salad oil, soap, shampoo, cosmetics, etc.  
   
In Plastics **P05**

Cosmetic bottles condiment bottles  
Beverage and food (candy, etc.) cans  
Cans, glass bottles, and PET bottles

Cans other than those for beverages and food (those whose longest dimension is more or less under 30 cm)  
To small metal items and spray cans **P09**  
\*One- to (18 liters) cans in Oversized garbage

Spray cans and cassette fuel canisters (used up, with no contents remaining)  
\*Remove plastic caps and nozzles and place those in Plastics  
Without making any holes in them, in Small metal items and spray cans **P09**

Glass bottles that held agricultural chemicals, deleterious substances, etc., or that are already broken  
  
In burnable garbage **P10**  
Please wrap in thick paper, etc., place in the center of the garbage bag

Light bulbs (including broken ones)  
\*Unbroken fluorescent tubes are for collection at base **P13, 14**  
LEDs in burnable garbage or oversized garbage

Cans that held paint or machine oil (used up)  
In burnable garbage **P10**  
\*One- to (18 liters) cans in Oversized garbage

Tableware, cooking utensils, etc., made of heat-resistant glass  
In burnable garbage **P10**

⚠ Removing residential cans, glass bottles, and PET bottles or oversized garbage is prohibited by law, and enforcement patrols are conducted!



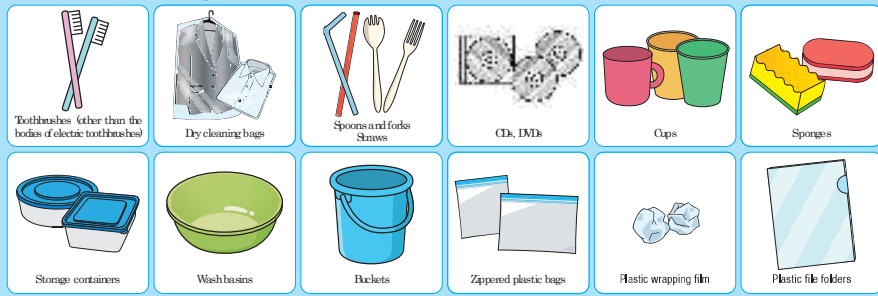
Cans, glass bottles, and PET bottles / Plastics 03  
Recyclable paper 07  
Small metal items, burnable garbage 09  
How to put out oversized garbage, carrying garbage to an incineration plant 11  
Other collection methods for recyclables 17  
Measures to encourage recycling by manufacturers 17  
How to separate garbage requiring extra caution 19  
What happens to recyclables 21  
Other efforts 23  
Items that cannot be accepted in Kyoto City

# Plastics (Plastic products and plastic containers and packaging)

For recyclable waste  
Collection is once per week  
for recyclable waste in designated transparent

## Plastic products

### Items made of 100% plastic materials



### Item made mostly of plastic materials



## Plastic containers and packaging

Trays, bottles, bags, cups, caps, cushioning materials (styrofoam, etc.)

Containers and packaging that held products that have been removed, so the containers and packaging are no longer needed

Look for the mark



\*PET bottles that have the "PET" recycle mark should be disposed of with "cans, glass bottles, and PET bottles."

\*Plastic products and plastic containers and packaging can be discarded in the same bag.

## How to correctly discard

1 In bags **separate** from cans, glass bottles, and PET bottles!

▲ They go in designated bags for recyclable waste just as cans, glass bottles, and PET bottles do, but never put them in the same bag. Put them in a separate bag to discard.

2 Use up the contents. Discard after removing any contamination

▲ If they are heavily soiled and cannot be cleaned, discard in **burnable garbage**

3 Do not put anything in that is not plastic!

▲ Especially, items that run on batteries or electricity (equipped with lithium ion or other rechargeable batteries), lighters, spray cans, etc., **can cause fires, so please never put them in.** Furthermore, in the case of plastics, items unsuitable for recycling have to be removed by hand after collection. Workers could be injured, so **please never put in sharp objects or home medical equipment (hypodermic needles).**

4 Please try to use retailer collection of trays

▲ Please cooperate with retailer collection of meat and seafood trays at the supermarket, etc., where you made your purchase.



## Items that cannot be separated and collected as plastics

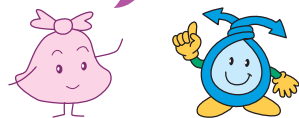
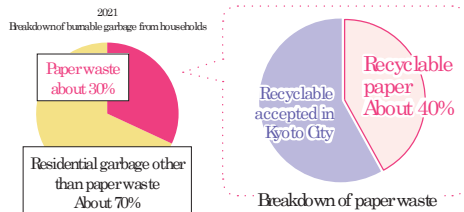
<p>Toys and small appliances, etc., that run on batteries such as lithium ion batteries or on electricity</p> <p>Lighters</p>	<p><b>They can cause fires during collection and recycling, so they go to collection at base <b>P13, 14</b></b></p> <p>*Soak lighters whose gas has been used up in water and then put them in <b>burnable garbage P10</b></p>
<p>Sharp objects</p>	<p>They can injure workers during collection and recycling, so they go to collection at base <b>P13, 14</b></p>
<p>Home medical equipment (syringes, etc.)</p>	<p>Please return them to the issuing pharmacy or medical institution</p> <p>Home medical use plastic bags, tubing, and catheters are <b>burnable garbage, even if they are made of plastic P10</b></p>
<p>Masks, over-the-counter antigen tests, etc.</p>	<p>As an infectious disease countermeasure, in <b>burnable garbage P10</b></p>
<p>Plastic containers</p> <p>Coolers</p> <p>Clothing storage cases</p>	<p>They can impact facilities during recycling, so put in oversized garbage <b>P11, 12</b></p>
<p>Items in sting or sheet shape that are 50 cm or longer</p> <p>Vinyl umbrellas</p>	<p>They can impact facilities during recycling, so put in <b>burnable garbage P10</b></p>
<p><b>Items too big to fit inside a garbage bag and that cannot be closed</b> (generally, items whose largest dimension is 50 cm or greater)</p>	<p>Refer to the Garbage Separation Dictionary at the end of this handbook <b>P26 - 34</b></p> <p>For items not listed, please ask the Resource Circulation Promotion Section</p>



# Recyclable paper

Separation and recycling are decisive factors in reducing garbage volume. Here we will discuss recyclable paper.

Paper accounts for about 30% of burnable garbage from households. Of that, about 40% is recyclable, mostly miscellaneous paper waste! By engaging in recycling, burnable garbage can still be reduced.



Some paper is not suitable for recycling, so check whether it is recyclable or not before discarding.

## Recyclable paper

Sort by type and place in paper bags, etc., and put it out.

- Newspapers**  
Community collection services. Put out for used paper recyclers.
  - Cardboard**  
Community collection services. Put out for used paper recyclers.
  - Paper cartons**  
Put in supermarket, etc., retailer collection.
- You can also take them to recyclables collection facilities. [P13, 14](#)

- Miscellaneous paper waste (Recyclable paper other than the three types to the left!)
- Flyers and catalogs
  - Magazines
  - Paper boxes
  - Envelopes and postcards
  - Wrapping paper
  - Paper bags
  - Mounting paper, drawing paper
  - Papertubes
  - Calendars
  - Note paper, copy paper, shredded paper
- ⚠ Remove personal information to the extent possible.  
⚠ Remove non paper bits such as plastic and cloth.

## Non-recyclable paper

The following kinds of paper have a negative impact on recyclables, so put them in your burnable garbage to discard. [P10](#)  
\*These kinds of paper cannot be recycled even if put through a shredder.

- Waterproofed paper
- Thermal paper, photosensitive paper (photo paper, fax paper, etc.)
- Coated paper
- Inkjet photo paper
- Paper bonded to something other than paper
- Paper with tape or other sticky material attached
- Crimped postcards
- Carbon paper, pressure-sensitive paper
- Scented paper
- Paper that does not dissolve easily in water (facial tissue, papertowels, etc.)
- Thermal expansion paper (braille paper)
- Paper contaminated with food, oil, etc.

## How should I discard "miscellaneous paper waste?"

\*Put out newspapers and cardboard together on the miscellaneous paper waste collection day.

Place separated miscellaneous paper waste in paper bags, etc., and put it out.

If you do not have any paper bags, you can tie it with string or put it in a colorless or white transparent bag with the contents visible.



So that large items such as cardboard, paper boxes, etc., take up less space, fold them and/or tie each type up with string, etc., separate them, and put them out.



Small items are also miscellaneous paper waste. Gather them into paper bags, etc., so they do not get scattered around.



Put out miscellaneous paper waste according to the following methods

Be sure to separate miscellaneous paper waste too!

### 1 Put out for community collection services

You can put them out for "community collection services" run by your neighborhood association or other neighborhood groups [P14](#), etc. For collection days, times, and locations, check with your neighborhood (neighborhood association, management association, etc.) or the Recyclables Collection Map.

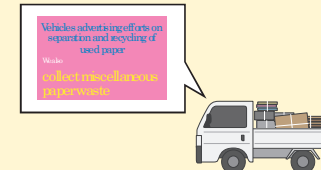
Kyoto City Recyclables collection Search



### 2 Put out for used paper recyclers

Used paper recyclers (declared businesses) make the rounds of the city with stickers that say "We also collect miscellaneous paper waste" and collect it. Additionally, if a business without a sticker comes to your area to collect, discuss it with them.

Miscellaneous paper waste Declared business Search



What if the above collection methods are difficult for me?

### 3 Put out miscellaneous paper waste on the collection day (twice a month)

Two times each month, you can put your miscellaneous paper waste in the recyclable waste designated pickup point. If they overlap with other recyclable waste collection days, please put out each kind a little at a time. (We ask for the neighborhood's understanding and cooperation)

\*Especially on rainy days, avoid scattering by putting it in transparent bags (A weight you can hold in one hand), etc.

\*Please be aware that sometimes collection will be later than for other garbage.



Confirm collection days and times, and other details on the internet.



In addition to 1 - 3, you can take it to a recyclables collection facility. [P13, 14](#)

Kyoto City Collection Day Map Search

Ask about miscellaneous paper waste at a Counter for Ecological Activities at a Ward Office or Branch Office, any City Beautification Office, or the City Beautification Promotion Section. (See back cover for contact information.)

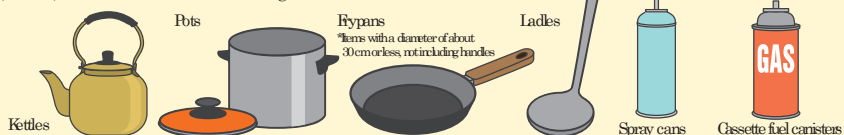
# Small metal items Spray cans

It is not necessary to use Kyoto City's fee-based designated bags for these

Collection is once per month

Put them in a transparent bag and attach a piece of paper with "Metal" written on it, or write "Metal" on the bag

Pots, kettles, and other metal items whose longest dimension is more or less under 30 cm



## How to correctly discard

### 1 Always completely use up contents and discard without making holes!

⚠️ Spray cans and cassette fuel canisters, etc., can cause fires if there is gas left inside them. Additionally, if you make holes in them to let the gas out, there is danger of explosion, so discard them without making holes.

### 2 Remove plastic caps and nozzles!

Put the caps, etc., that you remove with plastics to discard.

### 3 Remove grease stains first!

### 4 Take note of designated pickup points

⚠️ Collection is made by category, so if cans, glass bottles, PET bottles, and plastics have the same collection day, set out each of the types a little apart from each other

⚠️ For safe disposal methods if contents remain, check the Aerosol Industry Association of Japan website at <https://www.aiaj.or.jp/>!



## Key points about separation

Cans other than those for beverages and food (Not including those for paint or machine oil. Items whose longest dimension is more or less under 30 cm)	Small metal items and spray cans
Framed cookware (Items whose longest dimension is more or less under 30 cm or less)	Small metal items and spray cans
Cans for beverages and food (Items whose longest dimension is more or less under 30 cm)	In cans, glass bottles, and PET bottles P03
Glass lids of pots, etc.	In burnable garbage P10

The following items cannot be collected with small metal items and spray cans.

Item that might interfere with collection and processing	
Batteries, gas canisters, fire extinguishers, etc.	Ask the retailer or manufacturer P19, 20, 25
Medical equipment such as syringes and hypodermic needles, etc.	Always return them to the issuing pharmacy or medical institution P20
Sharp objects such as kitchen knives, box cutters, and scissors	To collection at base P13, 14 *If it would be difficult for you to take it to a collection base, wrap the whole object in thick paper and place it in the center of a garbage bag so there is no danger, and then put it out as burnable garbage
Products with lithium ion batteries, dry cell batteries, button batteries	To collection at base P13, 14 *Remove batteries if possible, and then to collection at base
Iron dumbbells and other heavy items	To oversized garbage P11, 12
Heating stoves, steel racks, one- to [18 liters] cans, and other large items (longest dimension more than 30 cm)	*Remove batteries if possible, and then to collection at base

# Burnable garbage

Paper is recyclable. Separate carefully! P07, 08

For burnable garbage Collection is 2 times per week  
In yellow designated garbage bags for burnable garbage

Kitchen garbage, non-recyclable paper, glass, etc.



Kitchen garbage



Glass



Non-recyclable paper

## How to correctly discard

⚠️ Oversized garbage cannot be disassembled for disposal as burnable garbage

### 1 Let's separate and reduce burnable garbage!

Paper, old clothing, etc., are recyclable.



Before putting it out, check again whether it is recyclable!



Paper P07, 08  
Unneeded paper should go to used paper recyclers or community collection services, etc.



Old clothing P13, 14  
Clothing that is no longer wearable should go to collection at base or community collection services, etc.



Eighteen categories of recyclables, including paper cartons, dry cell batteries, rechargeable batteries (lithium ion batteries, etc.), reusable bottles, fluorescent tubes, and used tempura oil P13, 14  
Collection at base is carried out for these recyclables.

### 2 Drain water before discarding kitchen garbage!

Kitchen garbage is about 80% moisture. Thoroughly drain water before throwing it in a wastebasket or garbage bag.



### 4 Wrap glass, etc., in thick paper; etc.!

⚠️ Glass, knives, and other sharp objects can be dangerous during collection so wrap the whole object in thick paper; etc., and place in the center of a garbage bag.



### 3 Double bagging is prohibited in principle!

⚠️ Except when unavoidable, as with dirty items such as kitchen garbage or disposable diapers, do not double bag to discard garbage.  
⚠️ When throwing away facemasks, etc., please do double bag as a measure against spreading infection.



### 5 Soak items that are fire sources in water!

⚠️ Soak matches, cigarette butts, etc., in water before discarding. Additionally, use up all the gas in lighters and soak them in water before discarding.



## NEWS Accident happens during collection work!

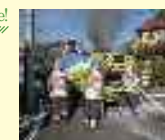
Collection workers have injured their hand by sharp objects directly placed in a garbage bag.

• You should use collection at base for dangerous items such as scissors, kitchen knives, and ceramics as much as possible. P13, 14  
If that is not possible, wrap the whole object in thick paper; etc., place it in the center of a garbage bag, and discard it as burnable garbage.



## NEWS Fire breaks out in collection vehicle!

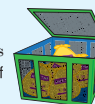
Explosions and fires have occurred in collection vehicles because of rechargeable batteries (lithium ion batteries, etc.) and cassette fuel canisters mixed in with garbage!



- Use up all the gas in lighters and cassette fuel canisters before discarding them
- Soak items that are fire sources in water before discarding
- Cassette fuel canisters go in small metal items and spray cans
- Rechargeable batteries (lithium ion batteries, etc.) and appliances equipped with them (small appliances) go to collection at base

## Please use anti-bird netting and cages

In order to prevent problems with garbage scattering by crows and wind, the City lends free anti-bird netting at designated pickup points where it collects garbage (generally those for five or more households). Additionally, the City carries out a project that reimburses part of the purchase price to people who want to buy three-dimensional crow repellent cages (bird-proof cages). See P24 for details.





# How to discard oversized garbage

Kyoto City Oversized garbage Search

For furniture and appliances (not including four categories of appliances and personal computers), etc., you can put them out after applying to the Oversized Garbage Receiving Center by phone or internet.

\*You can also take them directly to an Incineration Plant. [Right-hand page](#)

## How of applying for collection of oversized garbage

\*Fees range from ¥400 - ¥3,200, depending on collection item and size, etc.

Telephone application	Internet application
<p><b>1</b> Phone the Oversized Garbage Receiving Center</p> <p>Reception hours: 8:30 a.m. to 4:30 p.m. (except at year end/New Year's)</p> <p>⚠️ Open Saturdays, Sundays, and holidays too. ⚠️ You may inquire about fees without ordering.</p> <p><b>☎️ 0120-100-530</b> (Toll-free)</p> <p>Those using communication discount services (flat rate/free calls) for mobile phones, IP phones, etc., call <b>TEL 075-330-6100</b></p> <p>For other applications by mobile phone, call <b>TEL 0570-000-247</b> (Call charges apply)</p> <p>⚠️ For other matters concerning oversized garbage, please ask the Center for Clean Life Environment (Tel. 075-691-9376).</p>	<p>Use a computer or smartphone to access the dedicated site for applying</p> <p><a href="https://www.ogomi-kyoto.jp/">https://www.ogomi-kyoto.jp/</a> Hours: 24 hours, 365 days</p> <p><b>☎️ 0120-100-959</b></p> <p>Those using communication discount services (flat rate/free calls) for mobile phones, IP phones, etc., call <b>TEL 075-330-6081</b></p> <p>For other reservation by mobile phone, call <b>TEL 0570-000-604</b></p> <p>Reception hours: 8:30 a.m. to 4:30 p.m. (except at year end/New Year's)</p> <p>⚠️ Open Saturdays, Sundays, and holidays too. ⚠️ On your transport day, if there is an opening in the afternoon, transport will be possible if you make a reservation through the Call Center between 8:30 a.m. and noon.</p>
<p><b>2</b> Confirm collection day, fee, receipt number, designated pickup point</p> <p>Give your name, address, phone number, the type of garbage, and its quantity, size, and weight. After your call, we will notify you of the collection day, fee, receipt number, designated pickup point.</p> <p>⚠️ It generally takes one week from application to collection.</p> <p>⚠️ Some items cannot be collected. Items subject to the Act on Promotion of Recycling of Small Waste Electrical and Electronic Equipment <b>P15</b> Dangerous items <b>P25</b> Garbage from business activities <b>P25</b></p> <p>⚠️ The place where garbage is put out must be accessible to collection vehicles.</p> <p>⚠️ Collection days vary by area.</p>	<p><b>Confirm input of necessary info/details of application</b></p> <p>When inputting necessary info on the website, follow the on-screen instructions and enter your address, name, phone number, the type of garbage, its quantity, and your desired pickup date. If you have applied in the past, the site you used that time will be automatically entered by default.</p> <p>After inputting the necessary info, check the details of your application, and if there is no problem, finish it.</p>
<p><b>3</b> Purchase a bulky waste disposal fee ticket (sticker), and put out garbage</p> <p>Please purchase at a convenience store near you or a Counter for Ecological Activities at a Ward Office or Branch Office, etc., the required number of disposal fee tickets for the fee you were told at time of registration.</p> <p>Bulky waste disposal fee tickets are stickers. Stick the required number of tickets on each item in a clearly visible place with the collection day and either the receipt number or your name written on them. On collection day, put your bulky waste in the location you were told by 8:00 a.m.</p> <p>⚠️ The mounting paper that your bulky waste disposal fee ticket (sticker) was on is your receipt, so keep it and take good care of it. ⚠️ Put your garbage in the designated place (in principle, a road not on private property) in a way that does not block passage. ⚠️ You do not need to be present for the collection, but there might be a phone call from Kyoto City to confirm. ⚠️ Oversized garbage collection takes place between 8:30 a.m. and 4:00 p.m. (Specification of collection time is not possible) ⚠️ There may be several collection vehicles in operation for picking up different items, and the timing of pickup may vary for each item.</p> <p>● If requesting collection by a private-sector business, please request it from a business that has a Kyoto City collection and transport license (general waste). In that case, you do not need a bulky waste disposal fee ticket, but you will need to pay a collection and transport fee to the business.</p> <p>For questions about collection and transport of general waste/ Kyoto Environmental Business Cooperative TEL: 075-691-5516</p> <p>⚠️ Please do not request garbage processing by an unused item collection business without a Kyoto City license.</p>	

# Carrying garbage to an Incineration Plant

The following two Incineration Plants accept carry-in oversized garbage, etc.



About the advance reservation system

- When you carry in garbage, you need an advance reservation. Apply by internet or phone by **the day before** you will transport the garbage.
- Please be aware that the transport declarations (scanions) used in the past are no longer in use.

Telephone application	Internet application
<p><b>☎️ 0120-100-959</b></p> <p>Those using communication discount services (flat rate/free calls) for mobile phones, IP phones, etc., call <b>TEL 075-330-6081</b></p> <p>For other reservation by mobile phone, call <b>TEL 0570-000-604</b></p> <p>Reception hours: 8:30 a.m. to 4:30 p.m. (except at year end/New Year's)</p> <p>⚠️ Open Saturdays, Sundays, and holidays too. ⚠️ On your transport day, if there is an opening in the afternoon, transport will be possible if you make a reservation through the Call Center between 8:30 a.m. and noon.</p>	<p>Use a computer or smartphone to access the dedicated site for applying</p> <p><a href="https://www.ogomi-kyoto.jp/">https://www.ogomi-kyoto.jp/</a> Hours: 24 hours, 365 days</p> <p>Input of necessary info</p> <p>Please follow on-screen instructions to input necessary info.</p> <p>Confirm details of application</p> <p>Check the details of your application, and if there is no problem, it will be finished. The details of your application will be sent to the email address you entered when you accessed the website.</p>
<p>⚠️ Precautions when carrying in garbage</p> <ul style="list-style-type: none"> <li>● Only the discarding person <b>themselves</b> can bring garbage to an Incineration Plant. (You will be asked to show identification [driver's license]).</li> <li>● If you do not comply with garbage acceptance criteria, we may refuse entry.</li> <li>● Discard the garbage yourself at the spot designated. Furthermore, discard spots vary by size and type of garbage, so when you load your garbage, make it easy to separate when unloading. (Mixed dumping is not allowed.)</li> <li>● To prevent scattering of garbage, cover it with a plastic tarp, etc., when bringing it.</li> <li>● There are size and weight limits for furniture, bedding, etc. (furniture: no larger than 0.8 m x 1.5 m x 2 m, bedding: 10 pieces/day, etc.)</li> <li>● If you bring a large amount of garbage at one time, it might be impossible to accept, so please contact the Incineration Plant in advance.</li> </ul>	

### Carry-in locations

<p>● South Incineration Plant 29 Yokooji hattanda, Fushimi-ku <b>TEL 075-611-5362</b></p>	<p>● Northeast Incineration Plant 1339 Shizuchi-ichiharacho, Sakyo-ku <b>TEL 075-741-1003</b></p>
---	---

### Carry-in garbage hours, etc. (same at both Centers)

Carry-in hours	Monday through Friday, 2nd and 4th Saturdays 9:00 a.m. - noon, 1:00 p.m. - 4:30 p.m. *Accepts even when the above days fall on a holiday	Carry-in weight	Garbage processing fee
Closed days	Sundays, 1st, 3rd, 5th Saturdays	100 kg or less	¥1,500
		Over 100 kg	¥1,500 + ¥200/10 kg

### Examples of items that cannot be brought in

Some recyclable waste <b>P03 - 06</b>	Glass, glass bottles, and PET bottles, plastics (plastic products and plastic containers and packaging)	Items designated by the Act on Promotion of Recycling of Small Waste Electrical and Electronic Equipment, etc. <b>P15</b>	Televisions (CRT, liquid crystal, and plasma types), refrigerators and freezers, air conditioners (including outdoor units), washers and dryers, personal computers
Recyclable paper <b>P07, 08</b>	Newspapers, cardboard, paper containers, miscellaneous paper waste (flyers and catalogs, magazines, paper boxes, envelopes and postcards, wrapping paper, etc.)	Items that cannot be broken apart	Tires, motorcycle and vehicle parts, drums (containers), pianos, electrical and copper wire, chains, wire rope, motors and machine tools, safes, iron ingots, oil heaters, dehumidifier, bowling balls, RFP boats
Lithium-ion batteries, fluorescent tubes, etc. <b>P13, 14</b>	Mercury thermometers and blood pressure meters, fluorescent tubes (not including LEDs), rechargeable batteries (lithium-ion batteries, etc.), rechargeable battery-powered electric appliances, automobile batteries (including those for two-wheeled vehicles)	Industrial waste <b>P25</b>	Waste plastics, glass scraps, etc., produced by business activities
Dangerous items that might explode	Containers that hold petroleum, flammable powders (aluminum plastic), propane gas canisters, cassette fuel canisters, medicines, spray cans, fireworks, matches, lighters		

For details, please contact an Incineration Plant.

Carry-in locations 03  
Recyclable paper 07  
Small metal items, furniture, etc. 09  
How to put out oversized garbage 11  
Overcollection methods for fireworks 11  
Discarding fireworks, etc. by residents 17  
How to separate garbage requiring extra caution 19  
What happens to these items 21  
Overseas fire 23  
Items that cannot be accepted in Kyoto City



# Other collection methods for recyclables

Kyoto City collects recyclables and toxic and hazardous items at various locations through various methods and carries out resource recycling.



See the [Recyclables Collection Map](#) for collection locations, business hours, and items accepted by the community collection services and recyclables collection facilities described here.

Miscellaneous paper waste

People who do not use the internet, please contact a Counter for Ecological Activities at a Ward Office or Branch Office.

Collection at base (18 categories)					
① Newspapers Cardboard	② Miscellaneous paper waste (paper boxes, wrapping paper, etc.)	③ Paper cartons	④ Used Tempura oil	⑤ Old clothing (old clothes, fabric, etc.)	⑥ Dry cell batteries
⑦ Button batteries	⑧ Rechargeable batteries (lithium batteries, etc.)	⑨ Fluorescent tubes	⑩ Mercury thermometers and blood pressure meters	⑪ Small appliances (items 30 cm x 40 cm x 40 cm or smaller)	⑫ Magnetic tapes (videotape, cassette tape, etc.)
⑬ Ink cartridges	⑭ Reusable bottles (One-sho [1.8 liters] bottles, beer bottles)	⑮ Sharp objects (kitchen knives, scissors, etc.)	⑯ Disposable lighters with contents remaining	⑰ Ceramic tableware	⑱ Tree branches

- \*⑥⑦⑧ Please insulate the electrodes of button batteries and rechargeable batteries with tape, etc.
- \*⑨ Collection at base is not performed for LEDs. Please discard them as burnable garbage or oversized garbage.
- \*⑪ Discard appliances larger than 30 cm x 40 cm x 40 cm as oversized garbage (except for personal computers and the four categories of home appliances). Please take out removable batteries. Wooden, cloth, and liquid items cannot be collected. Please erase personal information and other data.
- \*⑮ Leaves on branches can be collected. Please discard fallen leaves as burnable garbage.

These recyclables are collected as follows.

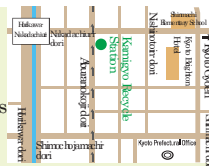
## Recyclables collection facilities

(Collection for ① - ⑱) \*Depending on collection site, some items cannot be discarded

Collection at base of recyclables is performed at each Counter for Ecological Activities at a Ward Office or Branch Office, each City Beautification Office, Kamigyo Recycle Station, cooperating stores in Kyoto City, etc. Items collected, days, and hours vary by base, so please ask a Counter for Ecological Activities at a Ward Office or Branch Office or check the Recyclables Collection Map.

### Kamigyo Recycle Station

Address: 100 Kainokami-cho, Aburakoji Higashiiru, Nakadachiuri-dori, Kamigyo-ku, Kyoto City  
Business hours: 9:00 am - 5:00 pm (open Saturdays, Sundays, and holidays) \*Closed year-end/New Year's  
Contact Information: City Beautification Promotion Section TEL. 075-222-3952



## Mobile collection services

Collection of categories ① - ⑱ and toxic and hazardous garbage



Mobile collection services project



Mobile collection services goes to schools, parks, and other sites familiar to the public to collect recyclables, petroleum, and other toxic and hazardous garbage. Check the internet or flyers circulated in each area for collection dates, times, and locations. Additionally, partial schedules are published in the Kyoto Shimin Shinbun.

## Mobile collection services for toxic and hazardous garbage includes collection of the following four categories.

- ① Petroleum
- ② Pharmaceuticals and agricultural chemicals
- ③ Chemicals, paints, waxes, art supplies
- ④ Detergents

If you have any questions or concerns, ask a Counter for Ecological Activities at a Ward Office or Branch Office.

## Community collection services

Kyoto City supports community members' voluntary garbage reduction and recycling activities by providing grants to groups such as neighborhood associations and condominium buildings that carry out group collection of recyclables.

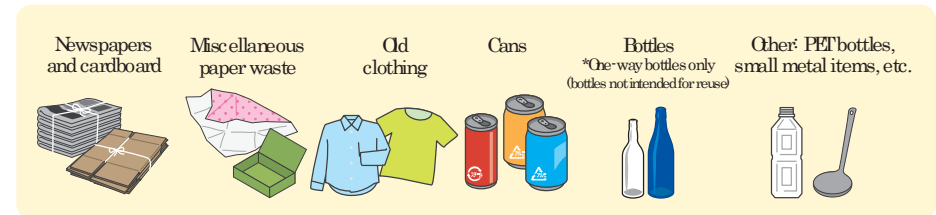
- If you want to start a new community collection service, ask about it at a Counter for Ecological Activities at a Ward Office or Branch Office.
- \*Condominium owners and management companies, contact the City Beautification Promotion Section.



Collection items vary by the group implementing the service, so check the Recyclables Collection Map!



## Items collected by community collection services



\*Some items are not collected at some collection sites.

## About collection of old clothing

Some old clothes can be collected, and some cannot, so please separate them correctly before discarding.

### What can be collected



### Old clothing that cannot be collected

Stained items, damp items, rugs, bed mats, sneakers, slippers, toilet seat covers, electric blankets, clothing scraps, stockings, items used by pets, curtains, bedding  
\*Items collected may vary by collection site.

Collected old clothing is reused as secondhand clothes or recycled as industrial rags or felt



\*Some clothing stores, etc., carry out retailer collection.

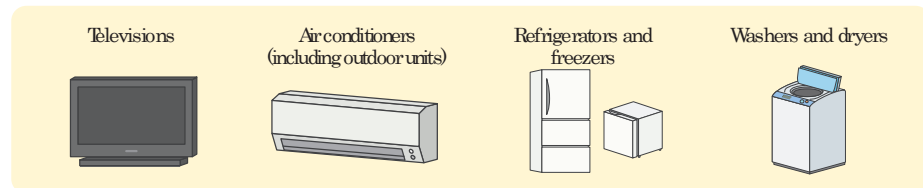


# Home appliances

## Four categories of home appliances

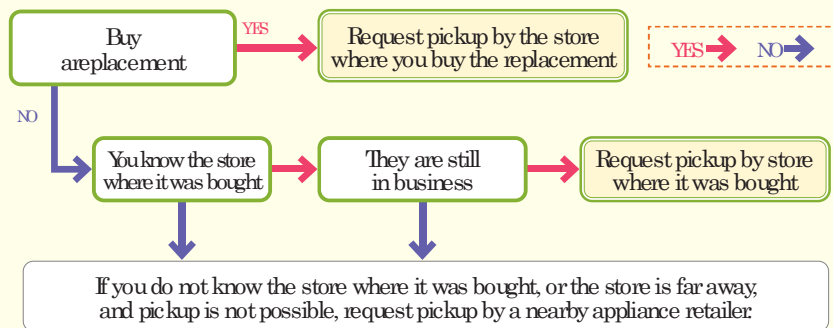
Televisions, air conditioners, refrigerators and freezers, and washers and dryers are subject to the Act on Promotion of Recycling of Small Waste Electrical and Electronic Equipment and for recycling must be discarded by the methods specified by law rather than processed by municipalities.

The four categories of home appliances specified by the Act on Promotion of Recycling of Small Waste Electrical and Electronic Equipment



## Correct disposal methods

- If having it picked up by the store where you bought it, store where you buy the replacement, or a nearby appliance retailer\*



- If you take it directly to a pickup location designated by an appliance manufacturer



Designated pickup locations \*Please be aware that designated pickup locations may relocate or otherwise change.

SHMAZAKI-UNSO Co., Ltd.	57-4 Yokoji-Rokutanhata, Fushimi-ku	TEL 075-604-6055
NIPPON EXPRESS (until Nov. 30, 2023) Rakunan Logistic Center	234 Kamitoba Shirogamecho, Minami-ku	TEL 075-681-9571
Kyoto Branch (from Dec. 4, 2023) Keihan Yodo Logistics Center	414-10 Yodomezucho, Fushimi-ku	TEL 075-748-9345
Myama Kyoto Express	43 Kishshoin Ishiharadonoushirocho, Minami-ku	TEL 075-693-7757

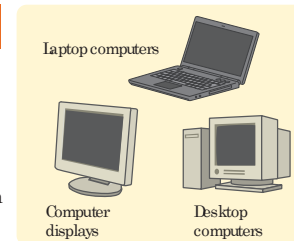
For recycling fees, etc., contact the manufacturer or the Appliance Recycling Ticket Center.

Appliance Recycling Ticket Center 0120-319-640

\*If you request pickup by an appliance retailer in addition to the recycling fee, there will be a fee for transport to a designated pickup location (varies by appliance retailer).

## Personal computers

Under the Act on the Promotion of Effective Utilization of Resources, manufacturers are required to collect and recycle used computers (and computer displays), so they must be discarded by the methods specified by law rather than processed by municipalities.



- Collection by computer manufacturer, etc.
  - If you know who the manufacturer is, contact the manufacturer's reception counter. (If there is no PC mark, a recycling fee will be necessary.)
  - For a home-built computer or a computer whose manufacturer has gone out of business, contact the PC3R Promotion Association's reception counter. See the association's website for details.

\* If a computer's case and display have different manufacturers, you must apply to each manufacturer separately.

Introduction of each manufacturer's reception counter and reception counter for computers that do not have a manufacturer because they are home-built or the manufacturer has gone out of business, etc.

PC3R Promotion Association TEL 03-5282-7685



- Collection by nationally-designated vendor ReNet Japan Group Inc. They use courier services to collect personal computers and small appliances. See their website for details.

◆ TEL: 0570-085-800 (10:00 a.m. - 5:00 p.m.)

Kyoto City ReNet Japan Group



Collections that include personal computers are free, up to one box (their data deletion service is fee-based, however). For details, visit the Kyoto City website or ask the Resource Circulation Promotion Section.

Kyoto City small appliances

## Small appliances P13

The City performs collection at base for almost all common electricity and battery-powered appliances within 30 × 40 × 40 cm. However, the four categories of home appliances (televisions, refrigerators, air conditioners, and washers and dryers), personal computers, large items that have been disassembled, and items from business activities are not eligible.

At collection sites, sometimes there will be a collection box as shown below, and sometimes there will be a worker at a counter to personally accept items.



\*Size allowed for collection at base  
Within 30 × 40 × 40 cm



Collection box

From the perspective of protecting personal information, to prevent risk of information leaks and outflows, before discarding, delete personal information from devices that contain it, such as mobile phones and smartphones. Additionally, absolutely no items placed in a collection box or picked up by mobile collection services, etc., and collected by the City will be returned. Please discard responsibly.

## Residents of condominiums, etc., where garbage is collected by private-sector companies

Within the city there are condominium buildings, etc., who have private-sector businesses pick up their garbage because they need daily or nighttime pickup, etc. If a private-sector business picks up your garbage, rather than putting it in Kyoto City's fee-based designated bags, you need to put your garbage in clear transparent or white transparent bags when you discard it. Furthermore, even if a private-sector business collects your garbage, **it still needs to be separated according to Kyoto City's collection rules.**

⚠ Details of how to put out garbage vary by each condominium building's collection system, so ask the management company of the building where you live.

Residents of condominiums, etc., where garbage is collected by private-sector companies, please put your garbage in **clear transparent** or **white transparent** bags.



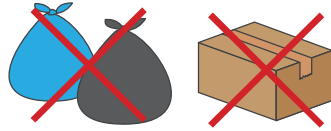
### 🎯 Usable bags

Please use study bags that are clear and transparent or white and transparent. Off-the-shelf bags sold at supermarkets, etc., are fine.



### ❌ Non-usable bags, etc.

You cannot put out your garbage in black, blue, or other colored bags or in cardboard boxes. You cannot use the fee-based designated bags (yellow bags) for burnable garbage either.



Please be sure to separate recyclable paper, cans, glass bottles, and PET bottles, plastics, and small metal items and spray cans.

Even if a private-sector business collects them, always separate the above recyclables.

### ⚠ When the disposal rules are not followed

If you do not follow disposal rules, e.g., not using clear transparent or white transparent bags, separating inadequately, or mixing in oversized garbage, private-sector businesses might not collect your garbage.



### Why can't I use Kyoto City's fee-based designated bags if a private-sector business is collecting?

The fee-based designated bags include a charge for garbage disposal. The garbage disposal charges of private-sector businesses already include that fee, so if you use fee-based designated bags, you will be charged twice for the same thing. Therefore, at condominiums, etc., where private-sector businesses collect the garbage, please use clear transparent or white transparent bags instead of fee-based designated bags.

## How to separate and dispose of garbage

We have a collection base even for recyclables not listed below, so please cooperate with separated collection in order to recycle our finite resources. **P13, P14**

### Recyclables

Please be sure to separate recyclable paper, cans, glass bottles, and PET bottles, plastics, and small metal items and spray cans!

#### Recyclable paper

Newspapers, cardboard, cartons, miscellaneous paper waste (flyers and catalogs, magazines, paper boxes, envelopes, wrapping paper, paper bags, etc.)



Put into paper bags by type and discard according to the following methods.

- Put out for community collection services.
- Put out for used paper recyclers. **P08**
- Take to collection facilities. **P13, 14**

#### Cans, glass bottles, and PET bottles

Food and drink cans, food and drink bottles, PET bottles for drinks, soy sauce, etc.



#### 1 Remove caps and labels from PET bottles first!

1. Discard removed caps and labels in plastics.
  2. Empty and wash before discarding.
  3. Do not put foreign objects such as cigarette butts and nails in them.
  4. Remove and separate caps. **P03**
- ⚠ Please put metal caps in burnable garbage and plastic caps in plastics.

#### Plastics

Plastic products  
Plastic containers and packaging



#### 1 Wipe off and briefly wash dirty items before discarding.

2. If the dirt is so bad it will not come off with washing, put the item in burnable garbage.
3. Even if it is made of plastic, never put in an item that is powered by batteries or electricity (with lithium ion batteries inside). **P05, 06**

#### Small metal items and spray cans

Pots, kettles, and other metal items whose longest dimension is more or less under 30 cm



1. Completely use up contents of spray cans and discard without making holes
2. Remove grease stains before discarding. **P09**

### Burnable garbage

Thoroughly separate before putting it out.

Kitchen garbage, non-recyclable paper, glass, etc.



#### 1 Drain water before discarding kitchen garbage.

2. Except when unavailable, as with dirty items such as disposable diapers, or with disposable facemasks, do not double bag to discard garbage.
3. Hazardous items such as glass, sharp objects, etc., are dangerous during collection, so wrap them entirely in thick paper, etc., and place in the center of a garbage bag.
4. Soak items that are fire sources in water.

### Oversized garbage

Do not throw away items that can still be used; pass them on to someone else for reuse through a flea market app, etc.

Furniture (chests of drawers, table, etc.)



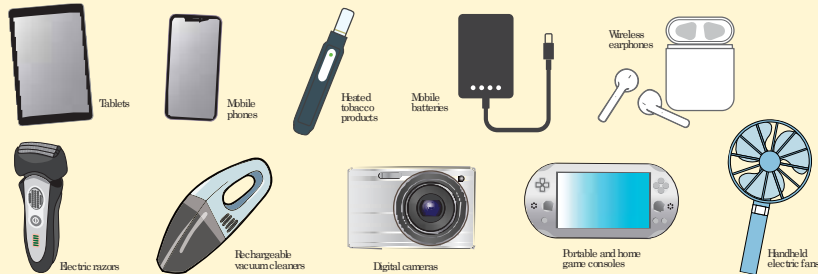
Please follow the rules of your condominium building, etc., when discarding oversized garbage.

Other disposal methods Ask Kyoto City's oversized garbage collection center **P11**  
Take it to an Incineration Plant **P12**

If the condominium building, etc., where you live does not separate recyclables as described above, contact the Resource Circulation Promotion Section. **TEL.075-222-3946**

# How to separate and discard garbage requiring extra caution

## Lithium ion batteries and other rechargeable batteries and battery-powered electric appliances



**How to correctly discard** ⚠️ Cannot be discarded as burnable garbage or recyclable waste.

### • Rechargeable electric appliances

Products that can be charged. Products that move or light up even when not plugged in might use rechargeable batteries.

■ If the products three dimensions are within 30 cm × 40 cm × 40 cm

As "small appliances" P13, 14

- ① Take to recyclables collection facilities (collection box)
- ② Take to mobile collection services

■ If larger than that

Dispose of as "oversized garbage" P11, 12

Dispose of removable batteries as rechargeable batteries

### • Rechargeable batteries

Rechargeable batteries have recycle marks based on their type.

Courtesy of Japan Containers and Packaging Recycling Association



\*Some do not have recycle marks, but lithium ion batteries, nickel-cadmium batteries, and nickel-hydrogen batteries are collected for recycling.

- ① Take to recyclables collection facilities P13
- ② Take to mobile collection services P14
- ③ Take to a cooperating retailer of (General Incorporated Association) JBRC

\*Established through the participation of battery manufacturers (members companies).  
It promotes the collection and recycling of rechargeable batteries.

For details:



## Improper disposal can cause serious fires!

There is a danger that rechargeable batteries inside rechargeable electric appliances will catch on fire during the garbage disposal process.

Fire in a garbage truck



Fire on a conveyor belt in an incineration plant



Even if the outside is plastic, never discard them in residential waste, of course, or in recyclable waste (plastics).

⚠️ Northeast Incineration Plant  
Crushing facility fire (March 2019)

Repair period: About 6 months  
Repair cost: About ¥150 million

Syringes, hypodermic needles, and other home medical equipment with needles



### How to correctly discard

⚠️ Cannot be discarded as burnable garbage or recyclable waste.

Return to issuing pharmacy, medical institution, etc.

\*Please dispose of plastic bags, tubing, and catheters as burnable garbage, even if they are made of plastic.



Because they can cause injury during collection/separation work, never put them in garbage bags.

Spray cans and cassette fuel canisters



### How to correctly discard

⚠️ Cannot be discarded as burnable garbage or recyclable waste.

Always completely use up contents and, without making holes, discard on the monthly collection day for small metal items and spray cans

(Counters for Ecological Activities accept them 2 times per month)

\*For how to remove contents safely if any are left, please check the websites of each manufacturer or the Aerosol Industry Association of Japan.



Gas or oil left inside can cause fires. Additionally, if you make holes in them to let the gas out, there is danger of explosion, so discard them without making holes.

Scissors, kitchen knives, box cutters, and other sharp objects



### How to correctly discard

⚠️ Cannot be discarded as burnable garbage or recyclable waste.

Take to a City Beautification Office or to mobile collection services P13, 14

(Counters for Ecological Activities do not accept them)



Use the above-noted collection sites to dispose of sharp objects if you can. If that is not possible, wrap the whole object in thick paper, etc., place it in the center of a garbage bag, and discard it as burnable garbage.

Lighters



### How to correctly discard

⚠️ Cannot be discarded as recyclable waste.

■ Completely used up ones  
Soak in water and put in burnable garbage P10


■ Those with some contents left  
Collection at base P13, 14

Cans, glass bottles, and PET bottles / Plastics 03  
Recyclable paper 07  
Small metal items, burnable garbage 09  
How to put out oversized garbage, carrying garbage to an incineration plant 11  
Other collection methods for recyclables 17  
Methods of removing gas, etc., by manufacturer companies 19  
How to separate garbage requiring extra caution 21  
What happens to recyclables 23  
Other efforts 23  
Items that cannot be accepted in Kyoto City



# What happens to recyclables

Recyclables collected through regular collection and collection at base, etc., are properly processed and recycled into various things or reused.

Types of recyclables	Recycling process flow	Recycled and reused!
<b>Cans, glass bottles, and PET bottles</b> 	 → Separated at recycling center → Transferred or sold to recycling business  → 	(Aluminum cans) Aluminum cans, auto parts, etc. (Steel cans) Steel cans, iron and steel, etc. (Glass bottles) Glass bottles, roadbed materials, etc. (PET bottles) Recycled PET bottles 
<b>Plastics (Plastic products and plastic containers and packaging)</b> 	 → Foreign body removal and compression packing at intermediate processing facility → Transferred to recycling business  → 	Recycled resins, pallets, chemical raw materials for plastics, etc. 
<b>Small metal items and spray cans</b> 	 → Aluminum and iron separated at South Incineration Plant → Sold to recycling business  → 	Rebar, steel frames, etc. 
<b>Newspapers, cardboard, miscellaneous paper waste (paper boxes, wrapping paper, etc.)</b> 	 → Recycling plant → Paper manufacturer  → 	Recycled paper, cardboard, etc. 
<b>Paper cartons</b> 	 → Recycling plant → Paper manufacturer  → 	Toilet paper, facial tissue, etc. 
<b>Used tempura oil</b> 	 → Processing at Kyoto City waste cooking oil fuel conversion facility 	Biodiesel fuel (used by garbage trucks and city buses) 
<b>Old clothing</b> 	 → Transferred to textile wholesaler or exporter → Transferred to rag manufacturer  → 	Secondhand clothing (foreign export) etc. 
<b>Dry-cell batteries and button batteries</b> 	 → Separation, processing, etc., by recycling business 	Iron products, manganese, zinc, mercury, etc. 

Types of recyclables	Recycling process flow	Recycled and reused!
<b>Rechargeable batteries</b> 	 → Separation, processing, etc., by recycling business 	Rechargeable batteries (lithium ion batteries, etc.), stainless steel products, magnets, etc. 
<b>Fluorescent tubes, mercury thermometers and blood pressure meters</b> 	 → Separation, processing, etc., by recycling business 	Glass, aluminum, mercury, etc. 
<b>Small appliances</b> 	 → Separation, processing, etc., by recycling business 	Gold, silver, copper, minor metals, etc. 
<b>Magnetic tapes (videotape, etc.)</b> 	 → Shredded by recycling business 	Plastic portions in chemical fuels and industrial boiler fuels 
<b>Ink cartridges</b> 	 → Sorting workshop → Each appliance manufacturer 	Reuse (cartridges), raw materials for recycled resins, etc. 
<b>Reusable bottles</b> 	 → Sorted and washed at Kyoto Glass Bottle Wholesaler Cooperative 	Reuse (one-sho [1.8 liters] bottles, beer bottles) 
<b>Sharp objects</b> 	 → Separation, processing, etc., by recycling business 	Iron and stainless steel products, etc. 
<b>Ceramics</b> 	 → Shredded by recycling business 	Aggregate, roadbed, etc. 
<b>Tree branches</b> 	 → Shredded by recycling business 	Compost fuel chips, etc. 
<b>(Unrecyclable) Burnable garbage</b> 	 → After incineration at an Incineration Plant, <sup>*1</sup> the incineration ash is buried at Etoland Olowa no-mori <sup>*2</sup> 	Energy obtained through incineration is used to supply electricity (power) 

Cans, glass bottles, and PET bottles / Plastics 03  
 Recyclable paper 07  
 Small metal items, Burnable garbage 09  
 How to put out oversized garbage, Carrying garbage to an incineration plant 11  
 Other collection methods for recyclables 13  
 How to put out oversized garbage, etc., requiring extra caution 17  
 How to separate garbage 19  
 What happens to recyclables 21  
 Other efforts 23  
 Items that cannot be accepted in Kyoto City

## Other efforts

Kyoto City carries out various other initiatives besides processing of recyclables and garbage. Additionally, private-sector businesses also actively carry out recycling initiatives. We will describe some of them here.

## About bodies of dead cats and dogs, etc.


- If your pet passes away, it can be collected for a fee of ¥4,810 per animal.
- Dead bodies of stray dogs, stray cats, and wild animals on roads, etc., are collected for no charge. Please contact the Dead Animal Collection Center. If passage is blocked outside of reception hours, please contact the civil engineering office in charge of that street.

### 1 Apply to the Dead Animal Collection Center for collection

- ☎ **0120-100-921** (toll-free)
- Those using communication discount services such as flat rates and free calls for mobile phones, IP phones, etc., call on **075-330-6850**
- For other applications by mobile phone, call **TEL.0570-000-614** (Call charges apply)
- Reception hours: Monday - Friday (including holidays) 8:30 a.m. - 4:30 p.m.  
Saturdays and Sundays 8:30 a.m. - 11:30 a.m.
- \*Collection time cannot be specified.
- \*Requests received after 4:00 p.m. will be picked up the following day.

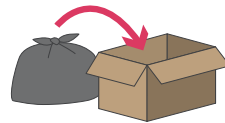
If bringing in a dead animal  
Center for Clean Life Environment  
TEL.075-691-9376  
Reception hours: Monday - Friday  
(including holidays)  
8:00 a.m. - 4:45 p.m.

### 2 Confirmation of animal type, your name, address, and phone number, and the designated pickup point

-  Animals kept as livestock, such as cattle, horses, chickens, pigs, sheep, and ducks, cannot be collected. \*If you kept yours as a pet, please discuss it with us.

### 3 After reception, collection

- Collection cannot be made on private property, so please bring it out to a public street. Put the body in a plastic bag, etc., and then in a cardboard box.
- \*Place only the body in the box. Remove its collar, etc.



### 4 Afterwards, you will receive a payment notice from the Center for Clean Life Environment

## Removal of human waste

If regular removal of human waste is necessary, advance registration (application) is necessary. In addition, after registration, if the number of people in the household changes, or if you move out or install a flush toilet, etc., so that you no longer need human waste removal, you need to change or cancel your registration. Please contact the Center for Clean Life Environment to do so.

For inquiries concerning registration, cancellation, fees, etc., contact  
Center for Clean Life Environment (in charge of accounts)  
TEL.075-691-4437  
Reception hours: Monday - Friday (including holidays)  
8:00 a.m. - 4:45 p.m.

For inquiries concerning collection work, contact  
Center for Clean Life Environment (in charge of life environment)  
TEL.075-681-5361  
Reception hours: Monday - Friday (including holidays)  
8:00 a.m. - 4:45 p.m.

## Support for city beautification activities

Based on applications, the City provides and lends cleaning tools and collects garbage for volunteer cleaning activities in public spaces.

**How to apply:** In general, submit your application with details of the beautification activities and the designated pickup point for garbage by 10 days before the activities take place.

**Where to apply:** A Counter for Ecological Activities at a Ward Office or Branch Office, a City Beautification Office, the City Beautification Promotion Section

\*See back cover for contact information.

\*The City provides and lends cleaning tools (volunteer bags, work gloves, fire tongs, etc.)

 If you will perform your cleaning activities only in a park or along a river, please contact their managers.

## Collection for people who are elderly or have disabilities and find it difficult to take out their garbage

Kyoto City Magokoro Collection (Since on Collection) Search

The city operates a **garbage collection welfare service (Magokoro Collection = Heartful Collection)** that will come to your door to collect garbage. For details, contact a City Beautification Office or a Counter for Ecological Activities at a Ward Office or Branch Office.

\*There are various requirements, such as using social welfare services and home helpers services, etc.

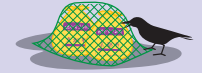
## About anti-crow measures

The City lends anti-bird netting at no charge.

**Project content** In principle, the City will lend one large or small anti-bird net at no charge.

\*Depending on the scale, etc., of a designated pickup point, lending up to two nets is possible.

**Inquiries** A Counter for Ecological Activities at a Ward Office or Branch Office or a City Beautification Office



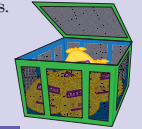
The City subsidizes purchase of bird-proof cages (three-dimensional crow repellent cages)!

**Project content** The City subsidizes a portion of the purchase price (1/2, up to ¥15,000) of bird-proof cages.

The number of subsidies is limited depending on the year.

**Caution** There are conditions attached to the use of bird-proof cages, such as their shapes, locations, and management methods.

**Inquiries** Environment Policy Bureau Recycling-Oriented Society Promotion Department  
City Beautification Promotion Section ☎ 222-3952



Kyoto City bird-proof cage purchase subsidy project Search

## About Kyoto City designated residential garbage collection bags

Kyoto City has introduced a fee-based designated bag system with two types of designated bags: those for burnable garbage and those for recyclable waste. You can buy designated bags at retail stores, supermarkets, convenience stores, etc.



		Capacity	45 l	30 l	20 l	10 l	5 l
For burnable garbage (formerly marked "for residential garbage") Sold as 10 bags per set	1 set		¥450	¥300	¥200	¥100	¥50
	1 bag		¥45	¥30	¥20	¥10	¥5
For recyclable waste Sold as five bags per set	1 set		¥110	¥75	¥50	¥25	
	1 bag		¥22	¥15	¥10	¥5	

## Where revenue from designated bags goes

Revenue from Kyoto City's fee-based designated bags is utilized for projects in three fields close to citizens' lives.

### Promotion of garbage reduction and recycling

- Rod waste, paper-waste reduction, plastic resource recycling
- Subsidizing community collection services
- Collection at base, etc., of recyclables

### City beautification promotion

- Lending of anti-bird netting
- Subsidizing purchases of bird-proof cages
- Providing garbage bags for volunteer cleanups
- Lending, etc., of surveillance cameras for illegal dumping, etc.

+

### Reserve funds for the Kyoto Citizen Environmental Fund

The Fund's reserves are used over the mid- to long-term in renewable energy sectors that apply advanced technologies, etc.

### Measures against global warming

- Promotion of use of solar power systems, etc.

Flyers and pamphlets that utilize revenue from fee-based designated bag carry **these marks!**



# Items that cannot be accepted in Kyoto City

## Garbage from places of business

Commercial waste from workplaces such as **shops, offices, lodging facilities, etc., cannot be put in residential waste.** Commercial waste is divided into general waste and industrial waste, so please dispose of properly by engaging businesses licensed to collect and transport each type. For commercial waste disposal methods, see the "Guidebook for Proper Waste Management" on the website for businesses Kyoto Kōgomi Net (<https://kyoto-kogomi.net/business/>).

Contact regarding general waste collection and transport: Kyoto Environmental Business Cooperative TEL: 075-691-5516

Contact regarding industrial waste collection and transport: Kyoto Industrial Waste Association TEL: 075-694-3402



### If you rely on an unlicensed business...

This may lead to illegal dumping. Furthermore, it is a violation of the Act on Waste Management and Public Cleaning punishable by imprisonment and fines, so when making an agreement for collection and transport, confirm that it is the same business listed on the license, etc., to ensure proper disposal.

## Other garbage that cannot be collected Also cannot be brought to City Incineration Plants

### ✗ Items containing hazardous substances

Item	Where to ask and how to dispose
Dry-cell batteries and button batteries	Return to retailer collection box or use collection at base. <b>P13, 14</b>
Automobile batteries (including those for two-wheeled vehicles)	Ask the retailer, etc.
Solar panels	
Medicines that are poisonous, deleterious, etc.	Ask the manufacturer or retailer, etc. *Some can be picked up by mobile collection services <b>P14</b>
Agricultural chemicals (for gardening, etc.)	
Syringes and hypodermic needles	Please return them to the issuing medical institution or pharmacy. <b>P20</b>

### ✗ Items that may be dangerous to collect and process

Item	Where to ask and how to dispose
Rechargeable batteries (lithium ion batteries, etc.)	Return to retailer collection box or use collection at base. <b>P13, 14</b>
Petroleum	Ask the retailer
Paints and solvents	*Some can be picked up by mobile collection services <b>P14</b>
Gas canisters	Ask the manufacturer or retailer, etc.
Fire extinguishers	The Japan Fire Extinguisher Manufacturers Association cooperates with local sales agents (distributors) on the disposal of fire extinguishers. For details, please ask the Fire Extinguisher Recycle Promotion Center <b>Fire Extinguisher Recycle Promotion Center</b> TEL: 03-5829-6773 URL: <a href="https://www.feipc.jp/">https://www.feipc.jp/</a> <input type="text"/> Fire extinguisher recycling counter <input type="button" value="Search"/>

Collection of fire extinguishers using Yu-Pack is also available. You must call in advance to apply, so ask the Yu-Pack call center.

### ✗ Items that are markedly large in volume or weight

Item	Where to ask and how to dispose
Automobiles	Ask the retailer.
Tires	
Large motors	
Pianos	Ask the manufacturer or retailer, etc.
Motorcycles and motorized two-wheeled vehicles	Ask the retailer, an automobile repair shop, or the below. <b>Motorcycle Recycling Call Center</b> TEL: 050-3000-0727 Reception hours: 9:30 a.m. - 5:00 p.m. (except Saturdays, Sundays, holidays and year end/New Year's)

## Garbage Separation Dictionary

\*For how to discard items not noted below, see the City's website (Kyoto Kōgomi Net [<https://kyoto-kogomi.net/citizens/>]) or contact the Resource Circulation Promotion Section (Tel: 075-222-3946).

\*Oversized garbage items cannot be crushed or disassembled for disposal as burnable garbage. We ask for your understanding and cooperation for the smooth collection and disposal of garbage.

Item	Classification	Key points of disposal methods	Related pages
A			
AEDs (main unit)	NG	Installation locations are registered and managed, so ask the retailer	25
Agricultural chemicals	NG	Ask the retailer. Mobile collection services are also possible (up to two bottles of one liter are acceptable depending on the type)	14, 25
Air conditioners	PL	Including outdoor units	15
Air pumps	PL, CB, OG	Manual ones (plastic) go in PL if the garbage bag will close, powered ones go in CB if no larger than 30 cm × 40 cm × 40 cm or OG if larger	5, 11 - 14
Air purifiers	CB, OG	Items up to 30 cm × 40 cm × 40 cm are CB anything larger is OG	11 - 14
Albums	BG, OG	If it is light enough to hold in one hand, and the garbage bag can be closed, it is BG. If disposing of a large amount at one time, it is OG (discard in bundles about 30 cm high)	10 - 12
Aluminum foil pots and pans	BG		10
Amplifiers	CB, OG	Items up to 30 cm × 40 cm × 40 cm are CB anything larger is OG	11 - 14
Antennas	OG	BS and CS antennas, etc., are the same	11, 12
Aquariums	OG, PL	Acrylic and glass ones are OG. For plastic items light enough to hold in one hand, if the garbage bag can be closed, put in PL anything bigger is OG	5, 11, 12
Ash	BG	Up to two bags per one collection can be BG if garbage bag is light enough to hold in one hand, and can be closed. *Dispose of after dampening so it does not scatter. Anything else is OG	10 - 12
Ashtrays	SM, BG	Metal ones 30 cm or less are SM. Anything else is BG. Wipe glass and ceramic items in thick paper, etc., and place in center of bag so they are not dangerous.	9, 10
Audio systems	CB, OG	Remove batteries before discarding. Items up to 30 cm × 40 cm × 40 cm are CB anything larger is OG	11 - 14
Auto parts (mufflers, bumpers, etc.)	NG	Ask the retailer	25
Automobiles	NG	Ask the retailer	25
B			
Baby bottles	PL, BG	Plastic items are PL. Anything else is BG	5, 10
Bags	BG, OG	Up to two bags per one collection can be BG if garbage bag is light enough to hold in one hand, and can be closed. Anything else is OG	10 - 12
Ballpoint pens	PL	If the ink has not been completely used up, remove the core and toss not made of plastic are BG	5
Balls	PL, BG	Plastic items are PL. Anything else is BG	5, 10
Bamboo	BG, OG	Up to two bags per one collection can be BG if garbage bag is light enough to hold in one hand, and can be closed. Anything else is OG (e.g., bamboo landscape, etc.)	10 - 12
Bamboo blinds	BG, OG	If it is light enough to hold in one hand, and the garbage bag can be closed, it is BG. All others are OG	10 - 12
Bamboo mat	OG	If you've asked a business firm replacement, ask that business firm for collection.	11, 12
Barbells	OG		11, 12
Bath covers	OG		11, 12
Bath floor mats	BG, OG	If it is light enough to hold in one hand, and the garbage bag can be closed, it is BG. Anything else is OG	10 - 12
Bath seats	PL, OG	For plastic items light enough to hold in one hand, if the garbage bag can be closed, put in PL. Anything else is OG	5, 11, 12
C			
Bathroom scales (bathroom scales)	CB, SM, OG	Digital ones up to 30 cm × 40 cm × 40 cm are CB analog, metal ones are SM if their longest portion is up to 30 cm anything else is OG	9, 11 - 14
Bats	OG		11, 12
Battery (medium to large)	CB	Motorized bicycles and small household use items are "Collection at base (exchangeable batteries)", ask retailers about those for automobiles, motorcycles and generators.	13, 14, 25
Battery (small)	CB	Refer to "Dry cell batteries and button batteries." "Rechargeable batteries (lithium ion batteries)"	13, 14
Battery chargers	CB		13, 14
Beds	OG		11, 12
Belts	BG		10
Benches (home use)	OG		11, 12
Bicycle airpumps	CB, OG	Motorized ones up to 30 cm × 40 cm × 40 cm are CB anything larger or manual ones are OG	11 - 14
Bicycles	OG	Motorized bicycle batteries are not accepted. Ask the retailer, etc.	11, 12
Bookcases	SM, OG	Metal ones 30 cm or less are SM. Anything else is OG	9, 11, 12
Blankets	CB	Those that are heavily soiled cannot be cleaned are BG	13, 14
Blenders (cooling equipment)	CB, OG	Items up to 30 cm × 40 cm × 40 cm are CB anything larger is OG	11 - 14
Blinds	OG		11, 12
Blood pressure meters	CB	Digital, those using mercury	13, 14
Burny discs	PL	Case only is also PL. Paper inside the case is MP	5
Burny players and recorders	CB, OG	Items up to 30 cm × 40 cm × 40 cm are CB anything larger is OG	11 - 14
Buses	NG	Ask the retailer	25
Books	MP		7, 8, 13, 14
Bottles (bottles not intended for reuse)	CE	For safety, wrap broken bottles in thick paper, etc., and place in center of bag for BG	3
Bowling balls	OG	Incineration Plants cannot accept them. Apply to the Oversized Garbage Receiving Center	11
Bowls (kitchen use)	SM, PL, BG	Metal ones are SM. Plastic ones are PL all others are BG	5, 9, 10
Box cutters	CB	Wrap in thick paper, etc., so they are not dangerous and safe to handle. *Collect at the Quarantine Station for Biological Activities (if placing in PL, wrap in thick paper, etc., and place in center of bag)	13, 14
Bread makers	CB, OG	Items up to 30 cm × 40 cm × 40 cm are CB anything larger is OG	11 - 14
Bricks	OG		11, 12
Brooms	PL, BG, OG	Ones with plastic handles and that are less than 50 cm are PL, all others are BG. If it is not light enough to hold in one hand, and the garbage bag cannot be closed, it is OG	5, 10 - 12
Brushes, combs	PL, BG	Plastic ones are PL, all others are BG	5, 10
BSTV tuners	CB		13, 14
Buckets	PL, SM, BG, OG	Items light enough to hold in one hand, and the garbage bag can be closed: Plastic ones are PL, metal ones 30 cm and under are SM, all others are BG; those too large to fit inside a garbage bag: OG	5, 9 - 12

List of classification marks	<b>BG</b> Burnable garbage collection	<b>CB</b> Collection at base *Some items cannot be discarded at our collection sites. Please check the Recyclable Collection Map <b>P13, 14</b>
	<b>CE</b> Separated collection of cans, glass bottles, and PET bottles	<b>MP</b> Recyclable paper other than newspapers, cardboard, and cartons <b>P07, 08, 13, 14</b>
	<b>PL</b> Separated collection of plastic items	<b>NG</b> Items that cannot be accepted by the city
	<b>SM</b> Separated collection of small metal items	<b>PL</b> Recycling of the items is mandated by law <b>P15, 16</b>
	<b>OG</b> Oversized garbage*	<b>RE</b> There are voluntary collection routes by retailers, etc.

\*Oversized garbage items cannot be crushed or disassembled for disposal as burnable garbage. We ask for your understanding and cooperation for the smooth collection and disposal of garbage.

\*Use **CB** (five) for small appliances of 30 cm × 40 cm × 40 cm or smaller.



Item	Classification	Key points of disposal methods	Related pages
Buddhist altar fitting	SM RG CG	Metal ones 30 cm or less are SM anything bigger is CG Anything other than metals, if light enough to hold in one hand, and the garbage bag can be closed, is RG Anything else is OG	9 - 12
Button batteries	RE CG	Insulate the electrodes with tape, etc., and dispose of through RR/CR. They can cause fires, so never discard them as BG, CE, PL, or SM	13,14
C			
Cables	CG		13,14
Cameras and digital cameras	CG	Remove batteries before discarding. Disposable cameras go in BG	13,14
Can openers	CG	Wrap in thick paper, etc., so they are not dangerous and take them in. *Other than of Quartz for Ecological Activities (if placing in BG, wrap in thick paper, etc., and place in center of bag)	13,14
Candles	RG		10
Cans	RG CG RE	If it is light enough to hold in one hand, and the garbage bag can be closed, it is RG anything else is OG Rinse them out. *One to (18 liters) cans are OG *One to (8 liters) cans are OG	10 - 12
Cans (for beverages and food)	CG		3
Cans (for paint or machine oil)	RG		10
Cans (other than those for beverages, food, paint, and machine oil)	SM	Items whose longest dimension is more or less under 30 cm. *One to (18 liters) cans are OG	9
Cardboard	CG		7,8, 13,14
Carpets	CG		11,12
Cassette fuel canisters	SM	If there is anything left inside, use it up outside where there are no spills and then discard without making holes	9
Cassette tapes	HL CG	If the tape portion is cut to 50 cm or less, HL anything else is CG	5,13,14
CD player	CG CG	Remove batteries before discarding, items up to 30 cm x 40 cm x 40 cm are CG anything larger is OG	11 - 14
CDs, DVD cases	HL	Paper inside the case is MP	5
Ceramics, vases	CG RG CG	Ceramic, pottery is CG (mobile collection services only). Porcelain, etc., up to two bags per one collection can be RG if garbage bags light enough to hold in one hand, and can be closed, anything else is OG	10 - 14
Chains	SM RG CG	Rivets light enough to hold in one hand, and the garbage bag can be closed, put in SM. For others, consult with the retailer, and plastic ones go in BG. (50 cm and under are plastic)	9,10,25
Chains (metal)	SM RG CG	Rivets light enough to hold in one hand, and the garbage bag can be closed, put in SM. For others, consult with the retailer, and plastic ones go in BG.	9,10,25
Chairs	CG		11,12
Charcoals	RG	Up to two bags per one collection can be RG of garbage bags light enough to hold in one hand, and can be closed. Dimpen and discard. Anything else is OG	10 - 12
Chemicals	NG	Ask the retailer. Mobile collection services are also possible (depending on type)	14,25
Chests of drawers	CG		11,12
Child seats	CG		11,12
Child vehicles, playthings (tricycles, bicycles, swings, etc.)	CG		11,12
Chisels	CG	Wrap in thick paper, etc., so they are not dangerous and take them in. *Other than of Quartz for Ecological Activities (if placing in BG, wrap in thick paper, etc., and place in center of bag)	13,14
Cigarette butts, ashes	RG	Completely put out fire, dampen and put in BG	10
Clay	RG CG	Up to two bags per one collection can be RG of garbage bags light enough to hold in one hand, and can be closed. Anything else is OG	10 - 12
Cling film	HL	Clean dirt. Those that cannot be cleaned are RG	5
Clinical thermometers	CG	Digibolons and those using mercury	13,14
Clocks (battery or electric powered)	CG CG	Remove batteries before discarding, items up to 30 cm x 40 cm x 40 cm are CG anything larger is OG	11 - 14
Cloth	CG	Those that are heavily soiled or cannot be cleaned are RG	13,14

Item	Classification	Key points of disposal methods	Related pages
Clothes	CG RE	Those that are heavily soiled or cannot be cleaned are RG	13,14
Clothes dryers	RG		15
Clothespins	SM PL RG	Rivets that are metal are SM. Plastic ones are PL, all others are RG	5,9,10
Clothing storage cases	CG	OG even if made of plastic	11,12
CO <sub>2</sub> canisters	SM	Ask the retailer first. Use up the contents of small items for beauty, drink products, etc., and dispose of as SM	9
Coating material (paint, etc.)	NG	Ask the retailer. Mobile collection services are also possible	14,25
Coffee makers, Tea makers	CG CG	Remove and place with BG as there is a risk of the glass, etc., contains breaking, which might injure in with processing	11 - 14
Colored plywood shelving	CG		11,12
Combination microwave ovens	CG CG	Items up to 30 cm x 40 cm x 40 cm are CG anything larger is OG	11 - 14
Computer mice	RE CG	If together with a computer, recycle with the method on page 16. Anything else is CG	13,14, 16
Computer monitors	RE	If you don't know who the manufacturer is, take it to PC Recycling Association	16
Computer parts	CG	Storage peripherals, etc., that are sold separately, if 30 cm x 40 cm x 40 cm or smaller, are CG. Products that have been disassembled are *Not eligible*: monitors, etc., are "ask the retailer"	13,14
Computers	RE	Includes standard attached items at time of purchase	16
Concrete blocks	CG		11,12
Contact lenses	RG	As they will become microplastics that contribute to ocean pollution, do not wash them down the drains of sinks and instead put them in BG (they are sanitary goods)	10
Cooking equipment	SM CG	Metal pots, cookers, kettles, frypans, etc., 30 cm or less are SM. Anything else is CG	9,11,12
Cooking stoves	CG		11,12
Coolers	CG	OG even if made of plastic	11,12
Cords	CG	Objects such as drums are OG	13,14
Cotton	RG		10
Cotton swabs	RG		10
Crayons	RG		10
Cupboards	CG		11,12
Cups	HL SM CG CG	Plastics are HL, metals are SM. Ceramic ones are CG (mobile collection services only). All others are RG	5,9,10, 13,14
Curain tracks	CG		11,12
Curtains	RG CG	Up to two bags per one collection can be RG. Anything else is OG	10 - 12
Fashioning materials	HL	Items not made of plastic are RG	5
Cushions	RG CG	If it is light enough to hold in one hand, and the garbage bag can be closed, it is RG anything else is CG. Cushions that use microbeads may spill their contents, which impedes collection, so put them in another bag before placing them inside a garbage bag and discarding	10 - 12
Cutting boards	HL RG	Plastic ones with a thickness up to 5 mm are HL, all others are RG	5,10
D			
Dehumidification agents	RG	If moisture remains, drain before discarding	10
Dehumidifiers	CG CG	Remove batteries before discarding, items up to 30 cm x 40 cm x 40 cm are CG anything larger is OG (exception: Humo cannot accept them, so apply to the Overseas Garbage Recycling Center. Can only be taken to collection facilities if a registered contractor certified in the collection of fire-damage items has been contacted for the removal of them, and a certificate indicating as such is also provided)	11,13, 14
Deleterious substances (toxic venous drugs)	NG	Ask the retailer	25
Dentures	RG	BG even if made of plastic	10

Item	Classification	Key points of disposal methods	Related pages
Deodorizers	RG	Outer boxes and packaging film are PL if made of plastic	10
Discicants (used with food)	RG	Do not open bags	10
Desk lamps	CG CG	Remove batteries before discarding, items up to 30 cm x 40 cm x 40 cm are CG anything larger is OG	11 - 14
Disks, tables	CG		11,12
Detergents	NG	Ask the retailer. Mobile collection services are also possible (depending on type)	14,25
Diatomaceous earth (mats, etc.)	RG	If it is light enough to hold in one hand, and the garbage bag can be closed, it is RG. Anything else is OG Products containing asbestos are voluntarily recalled by their manufacturers	10
Diesel	NG	Ask the retailer. Mobile collection services are also possible (up to 20 liters)	14,25
Digital cameras	CG	Remove batteries before discarding	13,14
Dirt	RG	Up to two bags per one collection can be RG of garbage bags light enough to hold in one hand, and can be closed. Anything else is OG	10
Dish washers	CG		11,12
Dishes	HL SM CG RG	Plastics are PL, metals are SM. Ceramic ones are CG (mobile collection services only). All others are RG	5,9,10, 13,14
Display monitors	RE CG	Recycle computer displays with the method on page 16. Other monitors up to 30 cm x 40 cm x 40 cm are CG anything larger is OG	11 - 14, 16
Disposable chopsticks	RG	Outer bags are PL if made of plastic	10
Disposable diapers	RG	Flush the waste down the toilet, then wrap the diapers in paper, bag, etc., and discard it	10
Doll cases	CG	Can be collected with doll inside	11,12
Dolls	HL RG	Items light enough to hold in one hand, and the garbage bag can be closed, plastic ones are HL, all others are RG; those too large to fit inside a garbage bag: OG	5, 10 - 12
Door/window screens	CG		11,12
Draining board (sink)	CG		11,12
Drumsets (musical instrument)	CG		11,12
Dry cell batteries (Zn-carbon, alkaline, lithium ion batteries, etc.)	RE CG	Dispose of through RR/CR. Insulate the electrodes of rechargeable ones with tape, etc. They can cause fires, so never discard them as RG, CG, PL, or SM	13,14
Dry cleaning bags	HL		5
Dryers (dish dryer, etc.)	CG	However, clothes dryers are RL(P15)	11,12
Duct tape	RG		10
Dumbbells	CG	Plastics light enough to hold in one hand are HL anything else is CG	11,12
Dustpans	HL SM RG	Plastic ones are PL, metal ones 30 cm and under are SM, all others are RG	5,9,10
DVD	HL	Case is PL, paper inside the case is MP	5
DVD/D players	CG CG	Items up to 30 cm x 40 cm x 40 cm are CG anything larger is OG	11 - 14
E			
Earphones	CG	Main unit is CG. Cloth cases are RG, plastic cases are PL	13,14
EARTHENWARE POTS	RG	If it is light enough to hold in one hand, and the garbage bag can be closed, it is RG. Anything else is OG	10 - 12
Ebikes	CG	Remove batteries and the main bicycle body is OG	11,12
Electric blankets	CG	Batteries with recycling marks are CG for others, consult with the retailer	11,12
Electric carpets	CG	Items 30 cm x 40 cm x 40 cm or smaller when not folded are CG	11,12
Electric cords, power strips	CG	Cathercords so they do not tangle	13,14
Electric fans	CG CG	Remove batteries before discarding handheld electric fans Items up to 30 cm x 40 cm x 40 cm are CG anything larger is OG	11 - 14
Electric fans Electric pianos	CG	Items using piano wire are not accepted. Depending on weight, ask the retailer, etc.	11,12
Electric razors	CG	Remove batteries before discarding	13,14
Electric toothbrushes (main body)	CG	Main bodies with removable foams like batteries removed are CG (*Rush portion is PL)	13,14
Electromagnetic ranges	CG CG	Items up to 30 cm x 40 cm x 40 cm are CG anything larger is OG	11 - 14

Item	Classification	Key points of disposal methods	Related pages
Electronic cigarette, heated tobacco	CG	There is a danger that rechargeable batteries will catch on fire during garbage processing, so they are CG	13,14
Electronic dictionaries (electronic organizers, calculators)	CG	Remove batteries before discarding	13,14
Empty coating material (paint, etc.) cans	RG CG	Up to two bags per one collection can be RG of garbage bags light enough to hold in one hand, and can be closed. Anything else is OG	10 - 12
Engine oil	NG	If you change it at home, consult a gas station or retailer about it first. Mobile collection services are also possible (up to 20 liters)	14,25
Engaving knives	CG	Wrap in thick paper, etc., so they are not dangerous and take them in. *Other than of Quartz for Ecological Activities (if placing in BG, wrap in thick paper, etc., and place in center of bag, so they are not dangerous)	13,14
Envelopes	MP		7,8,13,14
Extension cords	CG	Real types larger than 30 cm x 40 cm x 40 cm are OG	13,14
F			
Facial tissue paper (toilet paper)	RG		10
Fallen leaves	RG CG	Up to two bags per one collection can be RG of garbage bags light enough to hold in one hand, and can be closed. Anything else is OG	10 - 12
Fan coolers	CG CG	Items up to 30 cm x 40 cm x 40 cm are CG anything larger is OG	11 - 14
Fan heaters	CG CG	Gas, petroleum and kerosene are OG remove the petroleum, etc., before disposal. Electric and ceramic ones up to 30 cm x 40 cm x 40 cm are CG anything larger is OG	11 - 14
Fax machines	CG	Items up to 30 cm x 40 cm x 40 cm are CG anything larger is OG	11 - 14
Film (camera use)	RG		10
Fire extinguishers	NG	Ask the Fire Extinguisher Recycling Promotion Center	25
Fire extinguishers (spray cans)	SM	Use up the contents and do not open any small holes. Gaps are HL. Ask manufacturers about items that cannot be emptied	9
Fireworks	RG	Dampen with water and dispose of	10
Fishing rods	RG	When disposing two per bag if they protrude from the bag	10
Flashlights	CG	Remove batteries before discarding	13,14
Hardware racks	CG		11,12
Door brushes	HL RG CG	Ones with plastic handles and that are less than 50 cm are HL for all others, these for which a garbage bag can be closed are RG, and those too long to fit in a garbage bag and that cannot be closed are CG	5, 10 - 12
Flower vases	HL RG	Items made of plastic, it is PL. If it is not made of plastic (eg. glass) and is light enough to hold in one hand, and the garbage bag can be closed, it is RG. Anything else is OG	5, 10 - 12
Fluorescent tubes	CG	For safety, wrap them in thick paper, etc., and place in covered bag for RG. (See P26 for LEI)	13,14
Flyers	MP		7,8, 13,14
Folding chairs and tables	CG		11,12
Food turners	SM HL	If there is a metal part and it is 30 cm or less, SM plastic ones are HL, all others are RG	5,9,10
Forks	HL	Plastic ones are PL all others are "harmful garbage"	5,10
Roof wire borders (glass ones for making plum wire, etc.)	RG		10
Frypans	SM		9
Furniture (chests of drawers, etc.)	CG		11,12
Futon drivers	CG	Items up to 30 cm x 40 cm x 40 cm are CG anything larger is OG	11 - 14
Futons	CG		11,12
G			
Galvanized iron (corrugated sheets)	CG		11,12
Galvanized steel wires	RG	Wrap in thick paper, etc., and place in center of bag so they are not dangerous.	10
Game consoles	CG CG	Remove batteries before discarding, items up to 30 cm x 40 cm x 40 cm are CG anything larger is OG	11 - 14
Game software (cartridges)	CG		13,14

**Legend for classification marks:**

- BG** Burnable garbage collection
- CG** Separated collection of cans, glass bottles, and PET bottles
- HL** Separated collection of plastics
- SM** Separated collection of small metal items
- OG** Oversized garbage\*
- CB** Collection at base (Some items cannot be discarded as some collection sites. Please check the Recycling Collection Map P13, 14)
- MP** Recyclable paper other than newspapers, cardboard, and cartons P07, 08, 13, 14
- NG** Items that cannot be accepted by the city
- RE** Recycling is mandated by law P15, 16
- RE** There are voluntary collection routes by retailers, etc.

\*Oversized garbage items cannot be crushed or disassembled for disposal as burnable garbage. We ask for your understanding and cooperation for the smooth collection and disposal of garbage.

\*Use CG (free) for small appliances of 30cm x 40cm x 40cm or smaller.

Item	Classification	Key points of disposal methods	Related pages
Garbage can	HL	Items light enough to hold in one hand, and the garbage bag can be closed. Basic ones are PL and dimensions 30 cm or under are SM all others are BG. Those too large to fit inside a garbage bag: BG.	5, 9 - 12
	SM		
	HL		
	OG		
Gas canisters	NG	Ask the retailer or manufacturer. For those used with portable gas stoves	25
Gas ranges	OG		11.12
Gas stoves	OG		11.12
Gasoline	NG	Ask the retailer. Mobile collection services are also possible (put in gas can, up to 1 liter)	14, 25
Glass bottles (reusable glass bottles)	RE	Rinse them out. For safety, wrap broken bottles in thick paper, etc., and place in center of bag for BG.	13, 14
	OG		
Glass bottles lids	HL BG	Basics items are HL. Anything else is BG	5, 10
Glass plates and glass products	HL	Up to two bags per one collection can be BG if garbage bag is light enough to hold in one hand, and can be closed. Wrap in thick paper, etc., and place in center of bag. They are not dangerous. Anything else is OG (protect thickness with both packing tape).	10 - 12
	OG		
Glasses	BG		10
Glasses cases	HL BG	Basic ones are HL, all others are BG	5, 10
Globes	HL OG	Fit is light enough to hold in one hand, and the garbage bag can be closed, it is HL. Anything else is OG	10 - 12
Gloves (baseball, boxing, etc.)	BG		10
Gloves (cloth)	CB	Leather products or those that are heavily soiled or cannot be cleaned are BG	13, 14
Glow lamps (lighting tubes)	BG		10
Glue sticks	PL	Those with some contents left are BG	5
Go game boards	HL	Fit is light enough to hold in one hand, foldable, and the garbage bag can be closed, it is HL	11, 12
Golf balls	BG		10
Golf goods (clubs, bags)	OG		11, 12
Grass	BG OG	Up to two bags per one collection can be BG if garbage bag is light enough to hold in one hand, and can be closed. Anything else is OG	10 - 12
Graters	SM		9
Gravel	BG	Up to two bags per one collection can be BG if garbage bag is light enough to hold in one hand, and can be closed.	10
Green plastic garnish	HL		5
Gridbles (to me use)	SM	30 cm or less are SM. Anything else is OG	9, 11, 12
	OG		
Grocery bags	PL		5
Guitars	OG		11, 12
<b>H</b>			
Hair dryers, hair irons	CB		13, 14
(Hair) combs	HL	Basic ones are PL, all others are BG	5, 10
	BG		
Hairpins	HL BG	Basic ones are PL, (portion are also acceptable even if they include metal); all others are BG	5, 10
Hummers	HL SM	Ribbons, etc., without metal parts are BG	9, 10
Hand carts	OG		11, 12
Hand towels	CB	Those that are heavily soiled or cannot be cleaned are BG	13, 14
Hand warmers	HL OG	The warmers themselves are HL; the casings are HL. Rechargeable ones are CB	10, 13, 14
Hangers	SM HL BG	Beds that are metal and 30 cm or less are SM. Basic ones are HL. Items that are unbreakable become sharp are BG. All other materials that are sharp are HL	5, 9, 10
Hard disk drives (external)	CB	Items up to 30 cm × 40 cm × 40 cm are CB anything larger is OG. Some with internal hard disk drives that have been purchased separately (Sved data will be deleted)	11 - 14
	OG		
Hats	CB	Those that are heavily soiled or cannot be cleaned are BG	13, 14

Item	Classification	Key points of disposal methods	Related pages
Headphones	CB		13, 14
Health equipment (battery or electric powered)	CB	Remove batteries before discarding. Items up to 30 cm × 40 cm × 40 cm are CB anything larger is OG	11 - 14
	OG		
Heated tobacco products	CB RE		13, 14
Helmets	OG	Children's and those other than full face, if light enough to hold in one hand, and the garbage bag can be closed, are HL	11, 12
Hole punches	SM		9
Home medical use plastic bags, tubing, and catheters	HL	*Always return syringes needles to the issuing pharmacy, medical institution, etc.	10
	BG		
Hose reels	HL	If the item is light enough to hold in one hand with the hose removed, and if the garbage bag can be closed, put plastic ones in HL and anything else in OG	5, 11, 12
	OG		
Hoses	BG	Up to two bags per one collection can be BG if garbage bag is light enough to hold in one hand, and can be closed (items under 50 mm are HL). Anything else is OG	10 - 12
	OG		
Hit plates (shichirin)	OG		11, 12
Hot water boilers (electric appliances)	CB	Indicates electric appliances. Items 30 cm × 40 cm × 40 cm or smaller are BG. Anything else is OG. *Thermal bottles from insulating containers/are SM	13, 14
	OG		
Hot plates	CB	Items up to 30 cm × 40 cm × 40 cm are CB anything larger is OG. Place glass lids with BG as there is a risk of them breaking, which might interfere with processing	11 - 14
	OG		
Humidifiers	CB OG	Remove batteries before discarding. Items up to 30 cm × 40 cm × 40 cm are CB anything larger is OG	11 - 14
Hypodermic needles	NG	*Always return them to the issuing medical institution, pharmacy, etc.	25
<b>I</b>			
Ink cartridges	RE CB	For ink cartridges, use collection boxes at stores or CB, and for toner cartridges, ask the retailer or manufacturer to put in BG	13, 14
Insect cages/cases	HL OG	For plastic items light enough to hold in one hand, if the garbage bag can be closed, put in HL items that can be sharp or become sharp are HL anything else is OG	5, 11, 12
Interlocking foam tiles	HL		5
Ironing boards	OG		11, 12
Irms	CB		13, 14
<b>J</b>			
Juicers, blenders	CB OG	Main units CB remove and place glass, etc., contains with glass there is a risk of breaking, which might interfere with processing	11 - 14
<b>K</b>			
Kerosene	NG	Ask the retailer. Mobile collection services are also possible (up to 20 liters)	14, 25
Kerosene plastic containers	OG	Empty before discarding	11, 12
Kettles	SM		9
Keyboards (for computers)	HL CB	If they were in a set with a personal computer, the manufacturer will accept them for no charge. (P10). Items 30 cm × 40 cm × 40 cm or smaller only are HL if larger than that, they are CB	13, 14, 16
Keyboards (musical instruments)	CB OG	Items up to 30 cm × 40 cm × 40 cm are CB anything larger is OG	11 - 14
Keys	BG	From the perspective of crime prevention HL	10
Kmomo	CB	Those that are heavily soiled or cannot be cleaned are BG	13, 14
Kitchen garbage (cooling scrape)	BG	Adequately stain and dispose of	10
Kitchen knives	CB	Wrap in thick paper, etc., so they are not dangerous and take them in. *Other than at Counters for Ecological Activities (if placing in HL wrap in thick paper, etc., and place in center of bag)	13, 14
Kitchen range	OG		11, 12
Knapsacks	BG		10
Knives (razors, box cutters, etc.)	CB	Wrap in thick paper, etc., so they are not dangerous and take them in. *Other than at Counters for Ecological Activities (if placing in HL wrap in thick paper, etc., and place in center of bag)	13, 14
Kotatsu	OG		11, 12
<b>L</b>			

**BG** Burnable garbage collection  
**CE** Separated collection of cans, glass bottles, and PET bottles  
**HL** Separated collection of plastics  
**SM** Separated collection of small metal items  
**OG** Oversized garbage\*

**CB** Collection at base. (Some items cannot be discarded at some collection sites. Please check the Recycling Collection Map) **P13, 14**  
**MP** Recyclable paper other than newspapers, cardboard, and cartons **P07, 08, 13, 14**  
**NG** Items that cannot be accepted by the city  
**RL** Recycling is mandated by law **P15, 16**  
**RE** There are voluntary collection routes by retailers, etc.

Item	Classification	Key points of disposal methods	Related pages
Ladders	OG		11, 12
Ladles	SM	Basic ones are HL, those with metal parts are SM	5, 9
	HL		
LAN cables	CB		13, 14
Laptop computers	RL		16
Laundry poles, platforms	OG		11, 12
Lawnmowers	OG	Invention Plants cannot accept them, so apply to the Overseas Garbage Receiving Center	11
Lawnmowers (home use)	OG		11, 12
Leather products	BG	If it is light enough to hold in one hand, and the garbage bag can be closed, it is HL. Anything else is OG (large products such as carry-on bags)	10 - 12
	OG		
LED light bulbs and fluorescent tubes	BG	For a 40-watt or higher straight type LED fluorescent tube, etc., if half or more protrudes from the bag, it is CB. For all others, wrap in thick paper, etc., and place in center of bag to avoid danger of breakage and put it in BG	10
Lids	HL BG	Basics items are HL. Anything else is BG	5, 10
Lightbulbs	BG	Wrap in thick paper, etc., and place in center of bag so they are not dangerous. Fluorescent lightbulbs tubes are CB (see P26 for LEDs)	10
Lighters (disposable)	BG	*Soak lighters whose gas has been used up in water and transport them in BG. Those with some contents left are CB	10, 13, 14
	CB		
Lighters (other than disposable)	BG	Used up and discard	10
Lighting fixtures (table lights)	CB	Without including the umbrella portion, items 30 cm × 40 cm × 40 cm or smaller only are CB. If larger than that, they are OG.	11 - 14
	OG		
Lipstick	BG	Remove batteries and fluorescent tubes, as they can interfere with collection, and dispose of as CB. Lightbulbs and umbrella parts are HL (if glass, place in the center of the bag so it is not dangerous before disposal)	10
	CB		
Lithium ion batteries (rechargeable batteries)	RE CB	Isolate the electrodes with tape, etc., and dispose of through RE or CB. They can cause fires, so never discard them as BG, CE, PL, or SM	13, 14
Lockers	OG		11, 12
Lunchbox container outer film	HL		5
Lunchboxes	HL BG	Basics items are HL (rinse them out); all others are BG	5, 10
<b>M</b>			
Magazines	MP		7, 8, 13, 14
Magnets	BG		10
Magnifying glass	BG	Wrap in thick paper, etc., and place in center of bag so they are not dangerous.	10
Magnifying glasses	BG	Wrap in thick paper, etc., and place in center of bag so they are not dangerous.	10
Masks	BG	As an infectious disease countermeasure, put it in a bag, then put that in a garbage bag before disposal.	10
Massage chairs	OG		11, 12
Massagers	CB OG	Items up to 30 cm × 40 cm × 40 cm are CB anything larger is OG	11 - 14
Matches	BG	Soak in water and discard	10
Measuring tape	BG		10
Mechanical pencils	HL	As items with pointed tips are dangerous, remove the tip and take out the core before disposal, items not made of plastic are BG	5
Medical equipment (items without needles)	NG	*Always return syringe needles for home healthcare to the issuing pharmacy or medical institution	25
Medical equipment (items with needles)	BG	Home medical use plastic bags, tubing, and catheters are HL even if they are made of plastic	10
Medicine (if some is left over when it no longer needs to be taken)	BG	Rinse out bottles that had liquid medicine in them. Plastic containers and packaging go in HL	10
Medicine containers	CE HL	Rinse them out. Glass bottles go in CE. Plastic containers and packaging go in HL	3, 5
Microwave ovens	OG	Items up to 30 cm × 40 cm × 40 cm are CB anything larger is OG	11, 12
Milk bottles	RE	Return to retailer	-

Item	Classification	Key points of disposal methods	Related pages
Mini beer keg and taps (home use, metal)	RE SM	Items whose longest dimension is 30 cm or less are SM. Items disposed of in the course of business activities cannot be collected.	9
Mirrors	BG OG	Fit is light enough to hold in one hand, and the garbage bag can be closed, it is BG. Wrap in thick paper, etc., and place in center of bag so they are not dangerous. Anything else is OG	10 - 12
Mobile batteries	CB	There is a danger that they will catch on fire during garbage processing, so they are CB	13, 14
Mobile phones	CB	Those whose data have been discarded. Remove batteries if possible	13, 14
Monitors	RL CB OG	Recycle computer displays with the method on page 16. All other items up to 30 cm × 40 cm × 40 cm are CB anything larger is OG	11 - 14, 16
Mops	OG		11, 12
Motorcycles	NG	Ask the retailer or the Motorcycle Recycling Call Center	25
Motorized saws	OG		11, 12
Motorized two-wheeled vehicles	NG	Ask the retailer or the Motorcycle Recycling Call Center	25
Music boxes	BG OG	Fit is light enough to hold in one hand, and the garbage bag can be closed, it is BG anything else is OG	10 - 12
<b>N</b>			
Nails	BG	Wrap in thick paper, etc., and place in center of bag so they are not dangerous.	10
Needles	BG	Wrap in thick paper, etc., and place in center of bag so they are not dangerous.	10
Nets (liners for kitchen use, etc.)	BG	Rinse them out.	10
Nets (union use, orange uses, etc.)	HL BG	Basic materials less than 50 cm are PL all others are HL	5, 10
Newspapers			7, 8, 13, 14
Nickel-cadmium batteries (rechargeable batteries)	RE CB	Isolate the electrodes with tape, etc., and dispose of through RE or CB. They can cause fires, so never discard them as BG, CE, PL, or SM	13, 14
Nickel-hydrogen batteries (rechargeable batteries)	RE CB	Isolate the electrodes with tape, etc., and dispose of through RE or CB. They can cause fires, so never discard them as BG, CE, PL, or SM	13, 14
Notebooks	MP		7, 8, 13, 14
<b>O</b>			
Oil (edible)	CB	Flare-based oils only. Soak up animal-based oils such as lard with paper and discard as HL	13, 14
Oil (granular, etc.)	NG	Ask a gas station or the retailer. Collection by mobile collection services is also possible (up to 20 liters)	14, 25
Oil cans (machine oil)	BG	Empty them out. *One to (18 liters) cans are OG	10
Oil heaters	OG	Invention Plants cannot accept them. Apply to the Overseas Garbage Receiving Center	11
Old clothing	CB RE	Those that are heavily soiled or cannot be cleaned are BG	13, 14
One-l (1.8 liter) bottles	RE CB	Rinse them out. For safety, wrap broken bottles in thick paper, etc., and place in center of bag for BG	13, 14
One-to (18 liter) cans	OG	Empty cans out	11, 12
Ogans	OG		11, 12
<b>P</b>			
Packing string	HL BG	Basic items less than 50 cm are HL all others are BG	5, 10
Paddocks	SM		9
Paint	NG	Ask the retailer or mobile collection services (for cartons). Completely use up contents of spray paint cans and discard as SM	14, 25
Paints	BG	Mobile collection services are also possible	10
Pair of dumbbells	OG		11, 12
Pamphlets	MP		7, 8, 13, 14
Panel heaters	OG		11, 12
Paper bags	MP		7, 8, 13, 14
Paper cartons	RE	Those with aluminum foil on the inside (alcoholic beverage cartons) go in BG	7, 8, 13, 14
Paper sliding doors	OG		11, 12
Papered sliding doors	OG		11, 12
Partitioning screens	OG		11, 12
PC desks (metal)	OG		11, 12
Pencil boards	HL		5

\*Oversized garbage items cannot be crushed or disassembled for disposal as burnable garbage. We ask for your understanding and cooperation for the smooth collection and disposal of garbage.  
 \*Use **CB** (free) for small appliances of 30cm × 40cm × 40cm or smaller.

Item	Classification	Key points of disposal methods	Related pages
Pencil cases	SM PL RG	Metal ones 30 cm or less are SM. Plastic ones less than 30 cm are PL; all others are BG	5, 9-10
Pencil sharpeners (electric)	CB	Battery powered; remove batteries	13,14
PET bottles	CB RE	Remove caps and labels	3
PET bottle caps, labels	PL		5
Petrol sheets	RG		10
Petroleum	NG	Ask the retailer. Mobile collection services are also possible (gasoline up to four liters, anything else up to 20 liters)	14,25
Phonebooks	MP		7,8,13,14
Planes	NG	Ask the retailer or vendor	25
Pickling pots	OG		11,12
Picture frames	CB RG	If it is light enough to hold in one hand, and the garbage bag can be closed, it is RG	10-12
Pictures	RG		10
Pillows	RG OG	If it is light enough to hold in one hand, and the garbage bag can be closed, it is RG. Anything else is OG	10-12
Pipe beds	CB		11,12
Pipe hangers	CB		11,12
Pipes	CB		11,12
Plant pots	PL RG OG	Items light enough to hold in one hand, and the garbage bag can be closed: Plastic ones are PL; all others are RG; those too large to fit inside a garbage bag: OG	5, 10-12
Planters	PL RG OG	Items light enough to hold in one hand, and the garbage bag can be closed: Plastic ones are PL; all others are RG; those too large to fit inside a garbage bag: OG	5, 10-12
Plastic bags	PL		5
Plastic containers	OG		11,12
Plastic file folders	PL		5
Plastic model kits	PL		5
Plastic packaging film	PL	Clear dirt. Those that cannot be cleaned are BG	5
Plastic sheets, blue tarpaulin	PL RG OG	Items with their longest portless less than 50 cm are PL for anything larger, up to two bags per person; collection in the Big Garbage bags light enough to hold in one hand and can be closed; Anything else is OG	5, 10-12
Plies	SM		9
Pocket notebooks	MP	Remove parts not made of paper	7,8,13,14
Pools (home use)	CB		11,12
Portable gas stoves	SM CB OG	Metal ones 30 cm or less are SM. Battery powered ones no larger than 30 cm × 40 cm × 40 cm are CB; remove batteries before disposal; anything bigger is OG	9, 11-14
Portable LCD TVs, radios	CB	Remove batteries before discarding	13,14
Portable players (MP3, etc.)	CB	Remove batteries before discarding	13,14
Portable toilets	OG		11,12
Postcards	MP	Items that have undergone special machining, like crimped postcards and film paper postcards, are BG	7,8,13,14
Posters	MP		7,8,13,14
Pots	SM CB OG	Metal ones 30 cm or less are SM. Anything else is OG	9,11,12
Pottery	CB RG OG	Ceramic: fireware is CB (mobile collection services only). Everything else, up to two bags per person; collection in the Big Garbage bags light enough to hold in one hand, and can be closed: Anything else is OG	10-14
Potties	PL RG OG	Items light enough to hold in one hand, and the garbage bag can be closed: Plastic ones are PL; if stains cannot be removed, they are H. Those too large to fit inside a garbage bag: OG	5, 10-12

Item	Classification	Key points of disposal methods	Related pages
Pressure cookers	SM CB OG	Up to 30 cm including the handle(s) is SM. Anything else is OG	9,11,12
Pressurized canisters	NG	Ask the retailer or manufacturer. Refer to "Cassette fuel canisters" for Cassette gas canisters	25
Printers	CB RG OG	With ink cartridges removed. Items up to 30 cm × 40 cm × 40 cm are CB; anything larger: OG	11-14
R			
Rackets (tennis, badminton, etc.)	RG OG	Up to two persons; collection can be in Big Garbage bag or light enough to hold in one hand, and can be closed; Anything else is OG	10-12
Racks	CB OG	Metal ones up to 30 cm × 40 cm × 40 cm are CB; anything larger: OG	11,12
Radios, cassette players	CB	Remove batteries before discarding; items up to 30 cm × 40 cm × 40 cm are CB; anything larger: OG	11-14
Rags	RG		10
Raincoats	RG		10
Ransels	RG		10
Razors	CB	Wrap in thick paper, etc., so they are not dangerous and take them to "Botherman at Couriers for Biological Activities (if placing in BG wrap in thick paper, etc., and place in center of bag)"	13,14
Rechargeable batteries	CB RE	Small rechargeable batteries (nickel-cadmium batteries, nickel-hydrogen batteries, lithium ion batteries) can also be RE. Insert the electrodes and dispose of them	13,14
Records	PL	Jacket portion is MP	5
Refilling containers	PL RG OG	Reuse them out, and plastic ones are PL; all others are RG	5,10
Refrigerators and freezers	RG		15
Remote controllers	CB	Remove batteries before discarding	13,14
Rice cookers	CB RG OG	Items up to 30 cm × 40 cm × 40 cm are CB; anything larger: OG	11-14
Rice paddle	SM PL RG OG	Metal: are SM. Plastic: are PL. Anything else is RG	5,9,10
Rice cake maker (home use)	CB RG OG	Items up to 30 cm × 40 cm × 40 cm are CB; anything larger: OG	11-14
Robot vacuums (home use)	CB	Items up to 30 cm × 40 cm × 40 cm are CB; anything larger: OG	11,12
Roller skates, roller blades	OG	If it is light enough to hold in one hand, and the garbage bag can be closed, it is BG. Anything else is OG	11,12
Roof tiles	OG		11,12
Ropes	RG		10
Rubber bands	RG		10
Rubber products (rubber gloves, rubber boots, etc.)	RG		10
Rugs	OG	Electric carpets are also OG	11,12
Rulers	SM PL RG	Metal ones 30 cm and under are SM. Plastic ones are PL; all others are RG	5,9,10
S			
Safes (fireproof safes)	OG	Depending on weight, ask the retailer, etc. Empty and unlock before discarding. "Evacuation Plans cannot accept them. Apply to the Overized Garbage Receiving Center	11
Sand	RG OG	Up to two bags per person; collection can be in Big Garbage bag or light enough to hold in one hand, and can be closed; Anything else is OG	10-12
Sandals	RG		10
Sanitary goods	RG		10
Satchels	RG OG	If it is light enough to hold in one hand, and the garbage bag can be closed, it is BG. Anything else is OG	10-12
Saw	CB	Wrap in thick paper, etc., so they are not dangerous and take them to. Motorized saws are CB *Botherman at Couriers for Biological Activities (if placing in BG wrap in thick paper, etc., and place in center of bag)	13,14

Item	Classification	Key points of disposal methods	Related pages
Scanners	CB RG OG	Items up to 30 cm × 40 cm × 40 cm are CB; anything larger: OG	11-14
Scissors	CB	Wrap in thick paper, etc., so they are not dangerous and take them to "Botherman at Couriers for Biological Activities (if placing in BG wrap in thick paper, etc., and place in center of bag)"	13,14
Screws	RG	Wrap in thick paper, etc., and place in center of bag so they are not dangerous.	10
Scrubbing brush	RG		10
Sewing machines	CB RG OG	Metalized ones up to 30 cm × 40 cm × 40 cm are CB; anything larger: OG	11-14
Sharp objects (Scissors, kitchen knives, etc.)	CB	Wrap in thick paper, etc., so they are not dangerous and take them to *Botherman at Couriers for Biological Activities (if placing in BG wrap in thick paper, etc., and place in center of bag)	13,14
Shaved ice machines	CB RG OG	Metalized ones up to 30 cm × 40 cm × 40 cm are CB; anything larger: OG	11-14
Sheds	OG		11,12
Shoes	CB	Those that are heavily soiled are BG (Up to two bags per person; if they are light enough to hold in one hand and can be closed; Anything else is OG)	13,14
Shelves (book shelves, flatware racks, etc.)	OG		11,12
Shoes, boots	RG OG	Up to two bags per person; collection can be in Big Garbage bag or light enough to hold in one hand, and can be closed; Anything else is OG	10-12
Shog boards	CB	If it is light enough to hold in one hand, and the garbage bag can be closed, it is BG	11,12
Shredders	CB RG OG	Metalized items 30 cm × 40 cm × 40 cm or smaller are CB; if longer than that, they are RG. Manual items are H. Those that the blade portion will not be exposed and dispose of.	11-14
Side boards	CB		11,12
Slateboards	CB		11,12
Slewers	RG	Bamboo, plastic, and metal ones all go in RG. Wrap in thick paper, etc., and place in center of bag so they are not dangerous.	10
Ski equipment	OG		11,12
Slippers	RG		10
Small bowls	CB PL RG	Ceramic ones are CB (mobile collection services only). Plastic ones are PL; all others are RG	5,10, 13,14
Smartphones	CB	Please erase your data before discarding.	13,14
Speakers	RG		10
Sno boards	CB		11,12
Socks	CB	Those that are heavily soiled or cannot be cleaned are BG	13,14
Sofas	OG		11,12
Solar panels	NG	Ask the retailer.	25
Spades, shovels	PL SM RG OG	Items light enough to hold in one hand, and the garbage bag can be closed: Plastic ones are PL; metal ones 30 cm and under are SM; all others are BG. Those too large to fit inside a garbage bag (two-handed types): OG	5, 9-12
Spatulas	SM PL RG	Metal ones are SM. Plastic ones are PL; all others are RG	5,9,10
Speakers	CB RG OG	Remove batteries before discarding; items up to 30 cm × 40 cm × 40 cm are CB; if a wooden item is light enough to hold in one hand, fit in a garbage bag, and the bag can be closed, it is H; anything else is OG as it may interfere with recycling	11-14
Sponges	PL	Those that are heavily soiled and cannot be cleaned are BG	5
Spoon	SM PL RG	Metal: are SM. Plastic: ones are PL; all others are RG	5,9,10
Spray cans	SM	Use up the contents and do not open small holes. Plastic caps, etc. are H. Ask manufacturer about items that cannot be emptied.	9
Staples	RG	Main body and needles go in BG	10

Item	Classification	Key points of disposal methods	Related pages
Stepadders	OG		11,12
Storage containers	PL RG	Items not made of plastic are BG	5,10
Stove (electric)	CB RG OG	Items up to 30 cm × 40 cm × 40 cm are CB; anything larger: OG	11-14
Stove (gas, kerosene)	OG	Take out dry cell batteries, remove sensors, etc., and dispose of. Refer to "Portable gas stoves" and "Cassette fuel canisters" for Cassette fuel canister items	11,12
Strainer racks	PL SM RG	Basic ones are PL. Metal ones 30 cm and under are SM. All others are RG	5,9,10
Strainers	SM PL RG	Metal ones 30 cm or less are SM. Plastic ones less than 50 cm are PL; all others are RG	5,9,10
Snow mats	OG		11,12
Snows	PL	Paper, etc., items not made of plastic are BG	5
String (packing string)	PL RG	Basic materials less than 50 cm are PL; all others are BG	5,10
Strollers, high chairs, baby baths, baby beds	OG		11,12
Stuffed toys	RG OG	Up to two bags per person; collection can be in Big Garbage bag or light enough to hold in one hand, and can be closed; Anything else is OG	10-12
Suitcases	CB	Empty before discarding	11,12
Swim rings	PL RG	Those 50 cm and larger are BG	5,10
Swings (home use)	OG		11,12
T			
Tablets	PL CB	See P16 for ones with the PC mark. Anything else is CB; please erase your data before discarding.	13,14, 16
Tableware	PL SM CB RG	Plastics are PL; metals are SM. Ceramic ones are CB (mobile collection services only). Anything else is RG	5,9,10, 13,14
Tape measures	RG		10
Tape recorders	CB	Remove batteries before discarding	13,14
Teapots	CB RG	Ceramic ones are CB (mobile collection services only). All others are BG	10,13,14
Telephones (includes faxes)	CB RG	Remove batteries before discarding; items up to 30 cm × 40 cm × 40 cm are CB; anything larger: OG	11-14
Telescopes	OG		11,12
Televisions	RG		15
Temporary oil	CB		13,14
Tents	OG		11,12
Textbooks	MP		7,8, 13,14
Thermal gel packs	RG		10
Thermal paper (receipts, etc.)	RG	It cannot be recycled, so BG	10
Thermometers	CB	Digital: Those using mercury	13,14
Thermos bottle	SM CB OG	Indicates iron insulating containers that are not electric. Up to 30 cm is SM. Anything else is OG	9,11,12
Thinners	NG	Ask the retailer. Mobile collection services are also possible	14,25
Three (for automobiles, motorcycles)	NG	Ask the retailer	25
Toaster ovens	CB RG	Items up to 30 cm × 40 cm × 40 cm are CB; anything larger: OG	11-14
Toasters	CB RG	Items up to 30 cm × 40 cm × 40 cm are CB; anything larger: OG	11-14
Toner cartridges	RG RE	Ask the retailer or manufacturer or BG	10

**List of classification marks**

<b>RG</b> Burnable garbage collection	<b>CB</b> Collection at base (Some items cannot be discarded at some collection sites. Please check the Recyclable Collection Map) <b>P13, 14</b>
<b>CE</b> Separated collection of cans, glass bottles, and PET bottles	<b>MP</b> Recyclable paper other than newspapers, cardboard, and cartons <b>P07, 08, 13, 14</b>
<b>PL</b> Separated collection of plastics	<b>NG</b> Items that cannot be accepted by the city
<b>SM</b> Separated collection of small metal items	<b>RL</b> Recycling is mandated by law <b>P15, 16</b>
<b>OG</b> Oversized garbage*	<b>RE</b> There are voluntary collection routes by retailers, etc.

\*Oversized garbage items cannot be crushed or disassembled for disposal as burnable garbage. We ask for your understanding and cooperation for the smooth collection and disposal of garbage.  
\*Use **CB** (free) for small appliances of 30 cm × 40 cm × 40 cm or smaller





Item	Classification	Key points of disposal methods	Related pages
Tools	CB	Sharp objects such as <b>chisels</b> and <b>saws</b> (with thick paper, etc., so they are not dangerous and take them in a box) rather than <b>Containers for Biological wastes</b> D: Objects such as <b>pliers</b> and <b>wrenches</b> SM: Objects with <b>pointed tips</b> such as <b>screwdrivers</b> IG	9,10, 13,14
	SM		
	IG		
Toothbrushes (other than electric)	HL	Electric toothbrushes (main body) are CB	5
Towel hangers (those without cotton)	CB	Those that are heavily soiled or cannot be cleaned are IG	13,14
Towels	CB	Those that are heavily soiled or cannot be cleaned are IG	13,14
Toys (battery or electric-powered)	CB	Remove batteries before discarding. Items up to 30 cm × 40 cm × 40 cm are CB anything larger is OG	11 · 14
	OG		
Toys (other than battery or electric-powered)	HL	Items light enough to hold in one hand, and the garbage bag can be closed. If it is made of plastic, it is HL. If it is not made of plastic, it is IG. If they are too large to fit inside a garbage bag OG	5, 10 · 12
	IG		
	OG		
Trays (food use)	RE HL		5
Tree branches	CB	No more than 50 cm long and no thicker than 10 cm each. Tie them with string or put them in a bag that makes the content visible. Up to two bundles (bags) are CB (mobile collection services only). Anything else is OG. If they are few in number, fallen leaves are IG	10 · 14
	IG		
	OG		
Bicycles	OG		11,12
Trouser presses	OG		11,12
Tumpets	OG		11,12
Trunks	OG		11,12
<b>U</b>			
Umbrella stands	SM OG	Metal ones 30 cm or less are SM anything bigger is OG	9,11,12
Umbrellas	IG OG	Up to two in one bag are IG. Anything else is OG (up to 20 per disposal)	10 · 12
Underwear	CB	Those that are heavily soiled or cannot be cleaned are IG	10,13, 14
	IG		
Unicycles	OG		11,12
USB thumb drives	CB		13,14
Used tea leaves (includes teabags)	IG		10
Used terpene oil	CB	Flammable oils only. Animal-based solid oils such as lard are IG	13,14
Uso mortars	OG	Mixtures are not accepted. Ask the retailer, etc.	11,12
<b>V</b>			
Vacuum cleaners	CB OG	Regardless of size, OG including the nozzle and hose. Main bodies that are 30 cm × 40 cm × 40 cm or smaller with the hose and nozzle removed are also acceptable for CB. Remove the internal garbage and the batteries before discarding	11 · 14
Vacuum nozzles - Hoses	HL IG	Nozzles and hoses that are plastic and up to 50 cm are PL all others are IG or OG if they are with the main body	5,10
Vanity tables and dressers	OG	Vanity chairs are changed separately	11,12
VCRs	CB OG	Items up to 30 cm × 40 cm × 40 cm are CB anything larger is OG	11 · 14
Ventilation fans	CB OG	Items up to 30 cm × 40 cm × 40 cm are CB anything larger is OG	11 · 14
Video cameras	CB	Remove batteries before discarding	13,14
Video tapes	HL CB	If the tape portion is cut to 50 cm or less, PL anything else is CB	5,13,14
<b>W</b>			
Wagons (kitchen use)	OG		11,12
Wallpaper	IG OG	Up to two bags per one collection can be IG if garbage bag is light enough to hold in one hand, and can be closed. Anything else is OG	10 · 12
Washing machines	RE		15
Waste oil (machine oil)	NG	Ask the retailer. Mobile collection services are also possible (up to 20 liters acceptable)	14,25

Item	Classification	Key points of disposal methods	Related pages
Water bottles	SM	Metal ones 30 cm or less are SM Plastic ones are PL all others are IG	5,9,10
	PL		
	IG		
Water dispenser bottles (detachable bottles)	CE HL	Those with a PET bottle identifying mark are in CE anything else is HL	3,5
Water purifier cartridges	IG	If moisture remains, drain before discarding	10
Water purifiers	IG	Items directly connected to faucets	10
Watering cans	PL	Items light enough to hold in one hand, and the garbage bag can be closed. If it is made of plastic, it is HL all others are IG	5, 9 · 12
	SM		
	IG		
	OG		
Wax (floor use)	NG	Ask the retailer. Mobile collection services are also possible	14,25
Wheelbarrows	OG		11,12
Wheels	NG	Ask the retailer	25
Whetstones	IG		10
Whisks	HL	Plastic items are HL those with metal parts are SM and electric-powered ones no larger than 30 cm × 40 cm × 40 cm are CB	5,9, 13,14
	SM		
	CB		
Wine coolers (wine cellars)	RE		15
Wireless devices	CB OG	Remove batteries before discarding. Items up to 30 cm × 40 cm × 40 cm are CB anything larger is OG	11 · 14
	OG		
Wires	IG	Wrap in the kg paper, etc., and place in center of bag so they are not dangerous	10
Wood	IG OG	Up to two bags per one collection can be IG if garbage bag is light enough to hold in one hand, and can be closed. Anything else is OG	10 · 12
	OG		
Wood panels	OG		11,12
Wood products	IG OG	If garbage bag is light enough to hold in one hand and can be closed, IG (up to two bags per one collection). Anything else is OG	10 · 12
	OG		
Wooden swords	OG		11,12
Wrapping paper	MP		7,8,13,14
Wristwatches	CB	Remove batteries if possible	13,14
Writing brushes	IG		10
<b>Y</b>			
Yoga mats	IG		10
<b>Z</b>			
Zabuton (Japanese cushions)	IG OG	Up to two bags per one collection can be IG if garbage bag is light enough to hold in one hand, and can be closed. Anything else is IG	10 · 12

**List of classification marks**

- IG** Burnable garbage collection
- CE** Separated collection of cans, glass bottles, and PET bottles
- HL** Separated collection of plastics
- SM** Separated collection of small metal items
- OG** Oversized garbage\*
- CB** Collection at base (Some items cannot be discarded at some collection sites. Please check the Recycling Collection Map) **P13, 14**
- MP** Recyclable paper other than newspapers, cardboard, and cartons **P07, 08, 13, 14**
- NG** Items that cannot be accepted by the city
- RE** Recycling is mandated by law **P15, 16**
- RE** There are voluntary collection routes by retailers, etc.

\*Oversized garbage items cannot be crushed or disassembled for disposal as burnable garbage. We ask for your understanding and cooperation for the smooth collection and disposal of garbage.  
\*Use **CB** (free) for small appliances of 30 cm × 40 cm × 40 cm or smaller.

# Contact Information:

## East City Beautification Office

(In charge of Kita Ward, Kamigyo Ward and Sakyo Ward)  
34-3 Takanonshibirakicho, Sakyo-ku TEL.075-722-4345

## Kita Counter for Ecological Activities

(Kita Ward Office 2nd floor) TEL.075-363-0155

## Kamigyo Counter for Ecological Activities

(Kamigyo Ward Office 1st floor) TEL.075-363-0776

## Sakyo Counter for Ecological Activities

(Sakyo Ward Office 2nd floor) TEL.075-366-0821

## West City Beautification Office

(In charge of Nakagyo Ward and Ukyo Ward)  
57-1 Saininshikawacho, Ukyo Ward TEL.075-882-5787

## Nakagyo Counter for Ecological Activities

(Nakagyo Ward Office 1st floor) TEL.075-366-0180

## Ukyo Counter for Ecological Activities

(Ukyo Ward Office 1st floor) TEL.075-366-0190

## Nishikyo City Beautification Office

(In charge of Nishikyo Ward)  
37 Katagaharakanicho, Nishikyo Ward TEL.075-391-5383

## Nishikyo Counter for Ecological Activities

(Nishikyo Ward Office 1st floor) TEL.075-363-0192

## Rakusai Counter for Ecological Activities

(Rakusai Branch 2nd floor) TEL.075-366-0194

## South City Beautification Office

(In charge of Higashiyama Ward, Shimogyo Ward and Minami Ward)  
50 Nshikujo Maimotocho, Minami-ku TEL.075-681-0456

## Higashiyama Counter for Ecological Activities

(Higashiyama Ward Office 2nd floor) TEL.075-363-0182

## Shimogyo Counter for Ecological Activities

(Shimogyo Ward Office 1st floor) TEL.075-366-0186

## Minami Counter for Ecological Activities

(Minami Ward Office 1st floor) TEL.075-366-0188

## Center for Clean Life Environment

62-1 Nshikujo Maimotocho, Minami-ku

- Oversize garbage, bodies of dead cats and dogs, etc.

TEL.075-691-9376

- Removal of human waste

(Registration, etc.) TEL.075-691-4437

(Collection work) TEL.075-681-5361

## Yamashina City Beautification Office

(In charge of Yamashina Ward, Fushimi Ward and Daigo Area)  
3 Onyumidercho, Yamashina-ku TEL.075-573-2457

## Yamashina Counter for Ecological Activities

(Yamashina Ward Office 1st floor) TEL.075-366-0184

## Daigo Counter for Ecological Activities

(Daigo Branch 2nd floor) TEL.075-363-0311

## Fushimi City Beautification Office

(In charge of Fushimi Ward) \*Excluding Daigo Area

447 Yokooji Senyomatsucho, Fushimi-ku TEL.075-601-7161

## Fushimi Counter for Ecological Activities

(Fushimi Ward Office 1st floor) TEL.075-363-0196

## Fukakusa Counter for Ecological Activities

(Fukakusa Branch 1st floor) TEL.075-366-0198



\* For details, contact a City Beautification Office concerning garbage collection and transportation.

## Inquiries concerning oversized garbage

Applications by landline (toll-free) ☎ 0120-100-530

Applications by mobile phone **Call charges apply**

If flat rate, etc., is used TEL.075-330-6100

Anything else TEL.0570-000-247

Center for Clean Life Environment TEL.075-691-9376

Inquiries concerning bodies of dead cats and dogs, etc. (including wild animals)

Applications by landline (toll-free) ☎ 0120-100-921

Applications by mobile phone **Call charges apply**

If flat rate, etc., is used TEL.075-330-6850

Anything else TEL.0570-000-614

Center for Clean Life Environment TEL.075-691-9376

## Environment Policy Bureau Related Departments

Resource Circulation Promotion Section TEL.075-222-3946

City Beautification Promotion Section TEL.075-222-3952

Facility Management Section TEL.075-222-3964

## Inquiries concerning carry-in garbage

Reservations by landline (toll-free) ☎ 0120-100-959

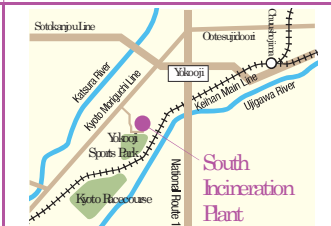
Reservations by mobile phone **Call charges apply**

If flat rate, etc., is used TEL.075-330-6081

Anything else TEL.0570-000-604



Northeast Incineration Plant  
Address: 1339 Shizichichiracho, Sakyo-ku  
TEL.075-741-1003



South Incineration Plant  
Address: 29 Yokoojihatanda, Fushimi-ku  
TEL.075-611-5362

Monday through Friday, 2nd and 4th Saturdays

9:00 a.m. - noon, 1:00 p.m. - 4:30 p.m.

\*Accepts even when the above days fall on a holiday

Closed days: Sundays, 1st, 3rd, 5th Saturdays



Kyoto City Garbage Reduction / Separating and Recycling Comprehensive Information Site

Kyoto Garbage Collection Net (Kyoto Kogomi Net)

<https://kyoto-kogomi.net>

Garbage collection nets (Kyoto Kogomi Net)

Search



The garbage separation guide app

"threeR"



The contact information listed is current as of October 2023 and may change.  
If you are not able to reach us by phone, please contact "Kyoto Itsudemo Call."



Kyoto Itsudemo Call TEL.075-661-3755 FAX.075-661-5855 8:00 a.m. - 9:00 p.m. (year round)

\*Make sure you dial the right number.

