

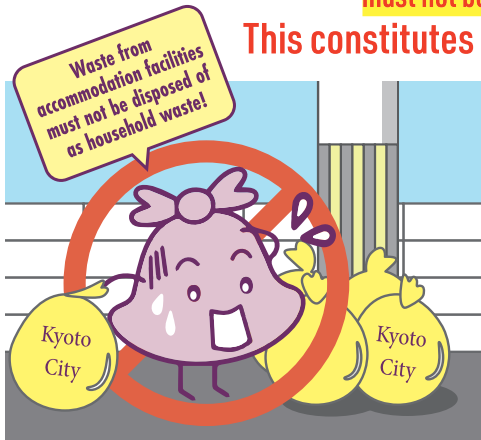
To all accommodation business operators

How to Properly Dispose of Waste from Accommodation Facilities

If you don't follow the rules, you will be **severely punished!**

Waste from accommodation facilities (commercial waste) **must not be placed at the same collection site as household waste.**

This constitutes illegal dumping and is subject to severe penalties.



Papers filed with prosecutors on suspicion of illegal dumping of waste from private lodgings

Ignorance is no excuse...



Papers have been filed with prosecutors against a real estate agency in Sakyo Ward and its former employees on suspicion of illegally dumping waste from their private lodgings at a waste collection site on condominium premises in Shimogyo Ward.

Oh, no!



• Imprisonment of up to five years
• Fine of up to 10 million yen (Up to 300 million yen for corporations)

POINT ①

How to separate waste properly — Waste must be separated into general commercial waste and industrial waste.



General commercial waste



Industrial waste

All plastics are industrial waste.

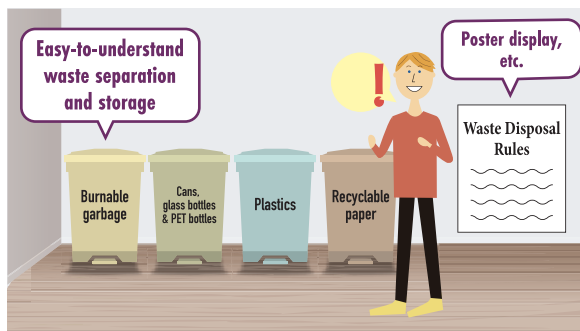
Let's separate waste!



* Please recycle what can be recycled (clean paper, etc.).

POINT ②

Proper waste separation and storage / Announcement of waste disposal rules to guests



To ensure that your guests do not become confused about how to dispose of their waste, **please provide trash cans for each type of waste and store waste within the facility.**

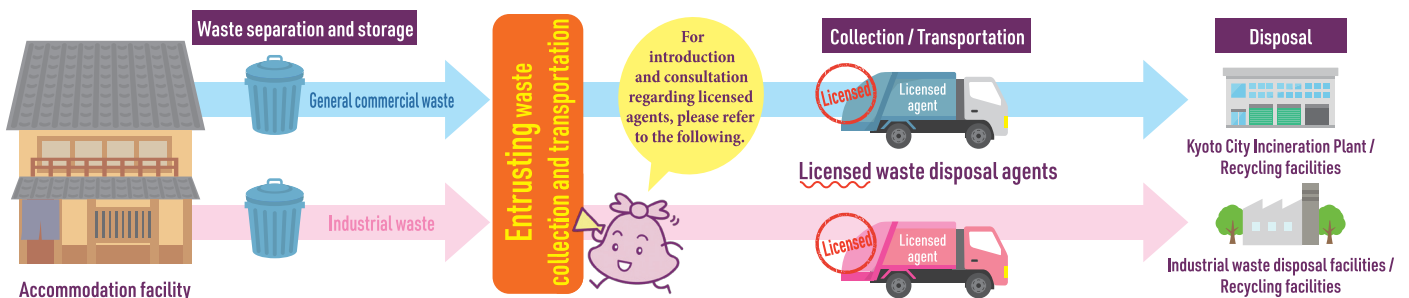
Please inform your guests of the waste separation rules.

OK!



POINT ③

Waste disposal (entrustment to licensed agents, etc.)



Separate waste properly and entrust its collection and transportation to a licensed waste disposal agent.

Introduction of **general commercial waste disposal agents** : Kyoto Environmental Business Cooperative (TEL: 075-691-5516)

Introduction of **industrial waste disposal agents** : Kyoto Industrial Waste Association (TEL: 075-694-3402)

* Some recyclable items, such as cans, bottles, and recyclable paper, can be entrusted to resource collection agents.

* You can also transport waste to a disposal facility by yourself.

Let's follow the rules!



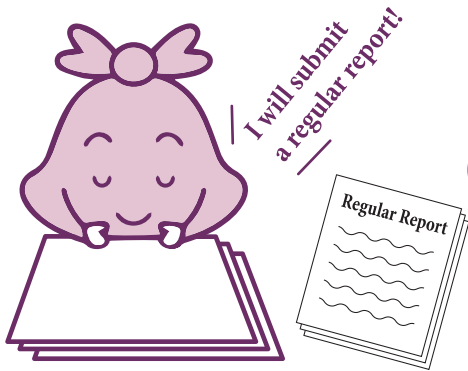
Kogomi-chan

Before starting a business, you need to report how you will dispose of waste.

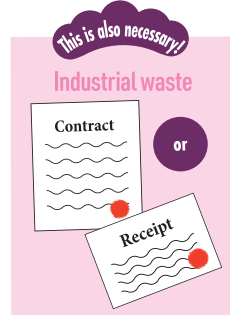
When applying for a hotel (a common lodging house, etc.) license or when filing a notification for a private lodging business, in accordance with the ordinance, you must **report to the Mayor of the City of Kyoto how you will dispose of waste (whether you will entrust it to a licensed agent or transport it by yourself)**. Moreover, if you entrust waste disposal to an agent, you must also **provide the name of the agent and the collection frequency to the Mayor of the City of Kyoto**.

In addition, private lodging operators **are required to submit documentation certifying proper waste disposal at the time of the first regular report submitted after the waste has been disposed of**.

- ◆ Where to submit: Private Lodging Business Screening Section, Kyoto City Sanitation Center (TEL: 075-748-1313; FAX: 075-251-7235)
- ◆ Contact for consultation on waste disposal methods, etc.: Refer to the following.



Regular reports to the City of Kyoto
(for private lodging operators only)



Required for both general commercial waste and industrial waste

Please attach waste-related documents to the first regular report after waste disposal.

Documents proving that waste has been properly disposed of (one of the following)

- Copy of a contract with a licensed waste collection and transportation agent
- Copy of a receipt issued by a Kyoto City Incineration Plant or a waste disposal agent, etc.



To prevent littering, please inform your guests of the following rules.

Please inform your guests that littering on the streets is prohibited by law.



Inquiries (we speak only in Japanese)

Introduction Introduction of licensed general commercial waste collection and transportation agents

Kyoto Environmental Business Cooperative
65 Ninodan-cho, Kisshoin-Shinden, Minami-ku, Kyoto

TEL:075-691-5516

Introduction Introduction of industrial waste disposal agents

Kyoto Industrial Waste Association (public corporation)
Johnson Bldg. 2nd floor, 53-4 Higashikujo Nakagoryo-cho, Minami-ku, Kyoto

TEL:075-694-3402

Consultation Consultation on general commercial waste disposal methods, etc.

Resource Circulation Promotion Section (in charge of commercial waste), Sound Material-Cycle Society Promotion Department, Kyoto City Environment Policy Bureau
488 Kamihonnojimae-cho, Oike-agaru, Teramachi-dori, Nakagyo-ku, Kyoto

TEL:075-222-3948

Consultation Consultation on industrial waste disposal methods, etc.

Waste Guidance Section, Sound Material-Cycle Society Promotion Department, Kyoto City Environment Policy Bureau
488 Kamihonnojimae-cho, Oike-agaru, Teramachi-dori, Nakagyo-ku, Kyoto

TEL:075-222-3957



SUSTAINABLE DEVELOPMENT GOALS

京都市は持続可能な開発目標 (SDGs)を支援しています。

Issued by Resource Circulation Promotion Section, Sound Material-Cycle Society Promotion Department, Kyoto City Environment Policy Bureau in August 2024
Kyoto City Printed Matter No. 064250

If this leaflet is no longer required, please recycle it as **miscellaneous paper waste!**

